



Inside

Community meeting in Opunake yields a host of ideas

A well-attended public meeting was held in Opunake on Thursday June 7 at 7pm.

Amongst the eighty people who attended the event, at the Opunake Bowling Club, was Mayor Phil Nixon as well as others from the South Taranaki District Council including Cr Bryan Roach and Andy Whitehead, Taranaki Coastal Community Board Chairperson. Constable Brad Coad of the Opunake police was also present, as were many local principals and teachers.

The meeting was organised by Opunake Primary Principal Lorraine



Lorraine Williamson (at right), Principal of Opunake Primary School, addresses the meeting.

can't do it by myself," he concluded.

One of the people who attended the meeting was James Langton, who was impressed. "It was a very proactive meeting with some very good ideas." He added, "On a personal level we need future thinking to set kids goals and teach them how to set and achieve goals." He concluded, "It was a very well organised meeting. Fantastic."

Ian Armstrong was pleased with "A good turnout and a good cross-section." He concluded, "If everyone does a little we can do a lot. I know we can achieve amazing things." However, he urged people to be specific, with such guiding questions kept in mind as: "What will we do? How will we do it? And what are the time frames?"

Mayor Nixon was most impressed with the meeting. "I think it is brilliant." He mentioned the well-known homily, which he supports. It takes a village to make a child. He concluded, "The meeting was awesome."

The next meeting will be on Thursday July 27, at the same venue, to allow the discussion of ideas and reach decisions.

meeting some years ago, which started well but foundered because "... the project may not have been managed as well as well as it could have been." The many "fantastic ideas" were therefore lost, but not the "goodwill and grit" prevalent in the community. "So we have called this meeting to harness that grit and goodwill...".

And the overall goal? "... a series of time-based goals, and (securing) community members who are prepared to help form a robust first plan of action." She referred to the large sheets of paper on each table (there were eight) so attendees could

brainstorm ideas using a café model system: "It's like group speed dating a lot of fun without the thrill of the catch" – to laughter.

Constable Brad Coad gave an interesting address pledging his support. He spoke of serious challenges which have impacted on other centres, but not Opunake - such as organised car theft. However, he acknowledged that some issues did affect Opunake and, as the only policeman at present in Opunake. He mentioned, "Damage to property" due to "boredom" – with too little to do - a factor.

"I need your help, I



Constable Brad Coad of the Opunake Police made an important contribution to the meeting

Williamson, with support from Stephanie McKellar (Attendance Co-ordinator) and Julie Hemahema (Attendance & Whanau Liaison) and local schools.

The meeting was expertly chaired by Ian Armstrong, who warned, "We don't want just a talk-fest, we want action."

The previous issue of this paper (June 1, page 3) explained that the meeting was to ensure Opunake remains a safe and vibrant place, with emphasis on sufficient activities for the youth of the town (See last issue's advertisement provides more detail).

The meeting opened with a karakia by Robyn Davey and concluded with a poroporoaki.

There were several speakers with the keynote one by Lorraine Williamson.

She spoke of the educational disruption caused by recent crises, such as Covid 19, "I do not want to dwell on the negatives, but just want to remind you that our young people have been through a lot. Nationwide schools are dealing with issues around non-attendance, health and mental well-being and behavioural issues." She paid tribute to the community, "... our young people are extremely fortunate to be growing in a small community, a community that cares."

She continued, "We (Opunake Primary), with support from my colleagues, decided to initiate this meeting to put more focus on what we as a community can do to further support our younger community members."

She spoke of an earlier



The café style brainstorming in groups led to many worthwhile ideas being written down on large sheets of paper. This is one of the eight groups and their ideas were shared with the meeting.



Dame Jacinda Ardern, former prime minister. See page 9.



Barbwire Boxing all ready for fight action. Turn to page 2.



Nasty accident on Ihaia Road. See page 6.



Progress at Dawson Falls. See page 7.



Sewage an issue in Manaia. See page 23.

Local news, local people, local businesses, local sport, local arts and events. Delivered free around the mountain every fortnight.



editorial@opunakecoastalnews.co.nz
ads@opunakecoastalnews.co.nz
accounts@opunakecoastalnews.co.nz

Phone: 06 761 7016
23 Napier St, Opunake

Much anticipated rematch among Rumble's many highlights

At this year's Coastal Rumble to be held on July 8 it will be Barbwire Boxing against everyone else. At least one boxer from every boxing club in Taranaki will be represented taking on a boxer from Barbwire Boxing

and Fitness in Opunake. "It's never been done before that one club has taken on the whole province," says Barbwire Boxing owner James (Batman) Langton. "It's hugely exciting for Barbwire Boxing and for



Barbwire Boxing is fully amped up and ready to rumble.

the Opunake community who are going to witness a historic event.

"I'm happy with our Barbwire Boxing team. Most fighters have had at least one fight and three from the Barbwire Boxing team are having their debut fight. We've got a lineup of fantastic fights. I think this will be one of our best shows at a coastal event. I'm absolutely stoked with how many businesses have come on board supporting the event. Every fight has a sponsor."

This year's Rumble will have two professional and nine corporate fights. The main card will see New Zealand representative boxer Te Kapotai-Kauri Tohu take on King Mafutaga Fa'ata'ape.

The other professional fight will see a much anticipated rematch between Trish MacKenzie and Ayisha Abied. The last time these two met was when they were the main card at the Coastal Rumble a year ago. Back then there was a split

decision in Ayisha's favour. Trish will be hoping to even the score.

"I'm pumped for the rematch," says Trish. "This is going to be a different fight from the first fight I know that."

Trish says she has benefited from training at the Olympus Gym in New Plymouth but is looking forward to getting back to Barbwire Boxing where her boxing career began, as well as appearing before her friends and family.

"I am really grateful and blessed to still be a part of Barbwire Boxing. I want to encourage and empower other females to get into the sport of boxing," she says.

In the year since then, both Trish and Ayisha have followed up that result with wins of their own. Ayisha has been fighting in Australia and had a split decision win over there., while Trish won by a TKO at the Battle for the Pacific in December.

Te Kapotai-Kauri Tohu (T.K) has had 70 fights, but this will be only his second

professional fight. His first professional fight, which he won, was only two months ago in New Plymouth.

James says he is delighted to have signed him up for Barbwire Boxing. As well as the Coastal Rumble T.K has been signed up for Barbwire

Boxing events in December, and in July next year.

The corporate fights will include another rematch with Caleb Parete taking on Zane Coleman. The two had previously faced each other at the same event where T.K had his first pro fight, with Zane winning on a split decision.

James says another fighter to watch out for is Jahryl Anderson from Opunake High School.

Ange Hapeta from Barbwire Boxing says she can be contacted for corporate table bookings. Tickets are available on the Eventfinda website for \$50 plus booking fee.

As of last weekend half the corporate tables had already been snapped up.

"I'm excited with the amount of interest so far," says James.



James (Batman) Langton with Te Kapotai-Kauri Tohu.

"Let's create your business growth strategy together"
Your only local community accounting firm



HUGHSON & ASSOCIATES
Accounting for the future, today

Hawera - Opunake - Patea - 06 278 4169
Opunake Office hours:
Mon, Wed & Thurs: 9am-3pm

RENTAL VEHICLES



- CHARTER BUSES
- VANS
- TOUR BUSES

ALUMINIUM SCAFFOLDING FOR HIRE
\$35 per day, \$50 weekend.
More than 6 days \$30 per day.

WATERBLASTER FOR HIRE
Petrol 3000 psi 15L/minC
Cost: Half day \$90, Full day \$120, Weekend \$130. Friday after 3pm return Monday 9am.
Bond for waterblaster and scaffolding \$50.
For more information contact Tracey or Linda at

PICKERING MOTORS
11 TENNYSON ST OPUNAKE Ph 06 761 8363
0800 22 11 20 Email: pickering.motorsltd@gmail.com


OPUNAKE & COASTAL NEWS

Registered office: 23 Napier Street, PO Box 74, Opunake
Phone: Office (06) 761-7016, A/h (06) 761-8206

For advertising, email: ads@opunakecoastalnews.co.nz
For editorial, email: editorial@opunakecoastalnews.co.nz
For accounts, email: accounts@opunakecoastalnews.co.nz

www.opunakecoastalnews.co.nz
Editor: Bernice McKellar
Journalists/Sales: Rolland McKellar, Bryan Kirk
Advertising/Production: Vanessa Smith
Production/IT: Shane Butler
Delivery: Thursday, fortnightly
Registered as a newspaper.

Member of the Community Newspapers Association of New Zealand



The Opunake and Coastal News is distributed free to every home and business within the rural area bounded in the north by the New Plymouth city border, extending east to Egmont Village, and around to the edge of Stratford, south to the Hawera city border and inland to Kaponga and through Eltham.

powerworx

POWER SUPPLY Rural & Residential

Design, upgrade and repair overhead and underground power supplies

- Powerco Approved Contractor
- Network connections
- Powerline maintenance
- Vegetation control around powerlines
- Fault repair
- Specialists in rural power servicing and installation
- High voltage installation
- Street lighting design and installation
- Underground utility detection

0800 877 746
powerworx@obertech.co.nz



TransAg Centre Ltd.
AGRICULTURE
... and proud of it



0.9% FINANCE
TERMS AND CONDITIONS APPLY

3YR/3000HRS WARRANTY

CASE IH **NEW HOLLAND**
AGRICULTURE

APPLIES TO ALL CASE IH & NEW HOLLAND RANGE

NEW PLYMOUTH	HAWERA
65 KATERE ROAD	16 GLOVER ROAD
06 758 2274	06 278 5119
PAUL STANTON 027 498 7277	RAYMOND 027 444 8861





HAWERA BLACK BULL COASTAL RUMBLE FIGHT NIGHT



DOORS OPEN 5.30PM 8 JULY 2023

SINCLAIR ELECTRICAL AND REFRIGERATION EVENTS CENTRE



'PROFESSIONAL'
TE KAPOTAI KAURI VS TBC

'PROFESSIONAL'
TRICIA MACKENZIE VS AYISHA ABIED

SPONSORED BY: **THONY AG LTD**
Spraying Contractor
PH Lance: 027 832 2086

SPONSORED BY: **MC LIVESTOCK**



CALEB PARETE VS ZANE COLEMAN

WAISEA BATISARESARE VS ZANDER WEIDEMAN

JADE WYLDE VS ANTHONY VAOGA

SPONSORED BY: **CLASSIC AUTO REPAIR**
Contact 06-761 8098

SPONSORED BY: **BARBWIRE FENCING**

SPONSORED BY: **AP Plasterers** **INTERGROUP**



BEAU PETLEY VS SHANNON MCMILLAN

JAHRYL ANDERSON VS KAYDEN RANGI

MARCIA HALES VS KYLIE NORTHCOTE

SPONSORED BY: **Elite FARM SOLUTIONS**

SPONSORED BY: **BARBWIRE SPORTSWEAR**

SPONSORED BY: **PBH BUILDING**



DANI HALLIDAY VS STEPHANIE ROSE

SANDRA GARGAN VS LEXI MCQUAIG

SPONSORED BY: **CAMPBELL CONTRACTING LTD**

SPONSORED BY: **M**

WEIGH IN 6PM FRIDAY NIGHT VENUE TBC
SATURDAY DOORS OPEN FROM 5.30PM
FIRST BOUT 7PM
GA TICKETS AVAILABLE ON
EVENT FINDA WEBSITE \$50 + FEE
CORPORATE TABLES \$1750
CONTACT ANGE 027 307 7565
OFFICIAL AFTERPARTY VENUE TBC

barbwiresport.co.nz

THINKING OF BUILDING IN 2023?

Start the design process with the Fowler Homes Taranaki team today.



Give Jason or Tony a call 0800 436 9537.
YOUR STYLE OF LIVING
www.fowlerhomes.co.nz



While we welcome free speech, the views expressed in the Letters to the Editor do not necessarily reflect those of the Opunake & Coastal News. Please limit letters to 350 words as we sometimes struggle for space to fit them all in.



Letters to the Editor

Time for the 50 to 65 demographic to ask critical questions

How do you think your parents are coping in retirement? Do you think they are being cared for by the system? Are they coping on \$350.00 per week? Do you think there are enough affordable homes and affordable retirement villages?

Comparing retirement to gaol, it costs billions of dollars annually to maintain prisons and prisoners; "we pay again", offering free board, free TV, free meals, no power bill, no phone bill or no bills in general. Who said crime doesn't pay? Criminals living in gaol cost us all some \$1900.00 per week. Compare that to the pension.

Do your kids care about your welfare and wellness in the 50 to 65 demographic?

Do you as a 50 to 65 citizen care about your parents' welfare or wellness?

Grey Power in the 65 + bracket care about their children, grandchildren and great grandchildren. That demographic offers a treasure-trove of experience and knowledge to underpin the positive outcomes for all people approaching retirement - and to benefit future generations.

Yes, it's time to give back to your parents, and at the same time project what it will be like when you retire.

Why am I asking these questions?

In 15 years, 2035, the population of 65+ is predicted to almost double. Do we need to adjust current thinking and models? Only you can tell us that.

I am willing to sit down and talk with groups anytime, anyplace within South Taranaki Area.

*Fred Kumeroa
President Grey Power
South Taranaki.*

Hutt became the 84th victim that Mt Taranaki has claimed who was killed by a huge falling boulder which tumbled down Snow Valley on the Northern Summit Track.

Experienced climbers like Ian McAlpine along with other climbers have been on this same track many times, yet even then have been very wary of this particular type of mountain track, as when Mr Hueslmann climbed, the weather was not only cloudy but the mist began to set in very quickly.

I went with a friend on an extremely fine day for a short walk and it finished with heavy mist coming in very quickly.

I do believe that our Department of Conservation should leave their contact number with every site office in our province so if anybody is wanting to climb they can be contacted. Plus have printed notices about being safe on our mountain, as this could save people's lives.

*Tom Stephens
New Plymouth.*

around inside Eltham's toilet and hearing that Opunake's toilets and rest rooms were also being targeted by vandals. Also it seems Stratford's toilets have also been got at. What's wrong with some people?

No doubt these vandals think it's a big joke, and if caught their names would be published in every newspaper in our province, and then be made to clean up these toilets for at least six months under police supervision. What society must realise is that today's criminals are getting extremely cleverer and cleverer every day because of technology. So us the public, regardless of where we all live must become more and more vigilant, otherwise crime will flourish big time, so maybe it's high time we actually have a type of watchful eyes who can and are able to seek out these crims. Whoever they are regardless of their gender or culture, instead of us all moaning and going on about what's going on in our city and towns. So let's all start helping our police as they can only do a certain amount of investigations.

*Tom Stephens
New Plymouth*

Vandals targeting toilets

After seeing the photo of toilet paper being strewn

Mountain death

On April 23 Christopher Hueslmann from Lower

Simple But Significant

a simple cremation & burials

Helping Taranaki families with a range of simple, professional funeral services. With affordable caskets, urns & jewellery.

0800 236 236 233 Carrington St
www.asimplecremation.co.nz New Plymouth

ADELPHOS

There are lots of old sayings we were told as young children. At 6 years old I remember my mother saying, "Don't forget to change your underwear every day. If you had an accident you might have to go to the hospital!" But here's one saying that's definitely not true, "No one is getting out of this life alive." Jesus poured ice cold water on that by saying, "I am the resurrection and the life. He who believes in me will live, even though he dies; and whoever lives and believes in me will never die. Do you believe this?" (John 10:25 NIV). Here, Jesus is making both an out of this world claim

Imagine

and asking us the same faith question today: Do you believe this? To prove His claim He immediately (probably within 30 minutes) resurrected His friend Lazarus after he was rotting in a grave for four days. Jesus put His money where His mouth is.

Then there's the repentant dying thief on the cross next to Jesus. His faith experienced a lot more than a big Lotto win. Because of his faith, Jesus promised to be with him immediately after He died, "Truly I tell you, today you will be with me in paradise." A Division 1 Powerball Lotto ticket in New Zealand supposedly has a winning chance of 1:38,000,000. The thief's chance of winning eternal life with Jesus was 1:1 or 100%. His faith won the

prize.

New Zealand Lotto is upgrading its "Imagine" ads to entice Kiwis. It uses imaginative themes of spending windfall fortunes on cars, homes and sharing this happiness with family and friends. Jesus likewise challenges our faith imagination in 2023: His living words in John 10:25 above promise that a deceased believer's spirit will never spiritually die. Even better, the New Testament clearly teaches that a believer's once earthly body and soul will one day be resurrected, perfected and reunited with his/her spirit—totally "transformed" like Jesus' new Easter Sunday resurrection body (Philippians 3:20-21; 1 John 3:2; 1 Corinthians 15:49). Only faith makes

this greatest imagination a reality.

But the problem is that at some point in everyone's life there will be a Shakespearean tragedy. And God typically gets blamed for permitting all evils to flourish. Jesus' simple offer of eternal life then gets lost in these gloom-ridden and faithless imaginations blaming God, others or ourselves. But with God nothing is impossible. Faith in Jesus is born and flourishes by desiring and inviting God's Spirit to work in our hearts, minds and lives.

Yup, with faith in Jesus you can definitely get out of this life alive. Imagine!

*Pax et Caritas,
Adelphos*

You can rely on us for your energy needs

www.rockgastaranaki.co.nz

Transform your home - all your hot water, space heating and cooking needs from your trusted local Rockgas supplier.

Count on us - reliable delivery of 45kg LPG cylinders to your home, business, or farm where ever you live.

Locally operated and proud to be part of your community

rockgas TARANAKI

Call Rockgas Taranaki
0800 LPG 2 YOU or 06 757 9264

FORKLIFTS | CONSTRUCTION EQUIPMENT

- RENTAL
- SERVICE
- PARTS
- NEW & USED SALES

AGENTS FOR NILFISK FLOORCARE PRODUCTS

AB EQUIPMENT

31 Hurlstone Drive, New Plymouth
Mike Robinson - Sales Specialist
Ph (06) 757 5197 or 0800 30 30 90
www.abequipment.co.nz

CRAWFORD

AGRITECH Ltd

- | TRACTOR & MACHINERY SERVICE & REPAIRS
- | ON FARM SERVICING
- | AIR CONDITIONING SERVICE, REPAIRS AND HOSE MAKING
- | SPARE PARTS & FARM OILS
- | IMPLEMENTS & ATTACHMENTS - SALES AND SERVICE
- | FACTORY TRAINED TECHNICIAN
- | TARANAKI & WANGANUI INDEPENDENT FERGIE TRACTOR SPECIALISTS

Ph 06 762 8023
Ian Crawford
Mob 0272 207 701

MASSEY FERGUSON | FORD | SAME | LANDINI | SEKI | VALTRA | MATBRO
INTERNATIONAL | MERLO | DAVID BROWN | RENAULT | URSUS | JOHN DEERE

MORRIS LUBRICANTS
the winning formula since 1869

Vacant railway reserve land set to pump

Today it is a largely empty paddock but there are plans to make Hurst Park the base for Opunake's new pump track.

Located on Gisborne Terrace across the road from the Opunake Bowling Club the piece of railway reserve land has been chosen as the site of a project that could be completed three to four months after funding has been sorted out.

On May 31 the Taranaki Coastal Community Board got behind the project with a \$5000 grant from the board's discretionary fund.

Community Board chair Andy Whitehead said the project is largely an initiative of the South Taranaki District Council who had applied to the Toi Foundation for a grant given to projects carried out on Council-owned land. The project has been costed at \$106,000 with \$80,000 coming from the Toi Foundation, leaving a balance of \$26,000.

South Taranaki District Council community development advisor Fran Levings described a



A pumped future awaits Hurst Park.

pump track as being "like a condensed BMX track, except it's made of asphalt." She told the board's May 31 meeting at Oaonui that the town revitalisation

discussions had mooted the idea of a community space at the Napier Street intersection which could serve as an accessible link to the beach and other focal

points around town like Hurst Park.

She said that Hurst Park, located in the middle of town with the Loop Trail already running through it, could

encourage more people to see the rest of the Trail for themselves. There is also parking space available with the Bowling Club and a Freedom Camping area

nearby.

South Taranaki District mayor Phil Nixon said a good example of a pump track at work could be seen at Stratford.

The board's deputy chair Sharilee Mariekura said there was no real starting point for the Opunake loop Trail, and the pump track could possibly serve that purpose. Another advantage is that the track would only be a block away from public toilets.

Board member Monica Willson said she was concerned about the park being separate from the centre of town. She said there should be adequate seating and parking space made available.

"I don't think this should be all the community's responsibility, and the Council should commit to it," she said.

Mayor Nixon said the community could apply for something to be done under the Long Term Plan.

Fran Levings said once the funding was sorted it would probably take three to four months to develop the track.

New maps reveal places at risk from coastal flooding

New maps from NIWA and the Deep South National Science Challenge show areas across our nation that could be inundated by extreme coastal flooding. They show a large storm-tide with the sea-level rise likely to be seen with climate change.

NIWA's Chief Scientist for Coasts and Estuaries Dr Scott Stephens says that these maps will help shape decisions on how we adapt to sea-level rise.

"Coastal flooding is a global hazard that impacts New Zealand, with rising sea levels already causing more frequent and intense flooding along many coasts. We have created maps that help identify the changing

risk to land, property, and infrastructure from rising seas, at a regional and national scale.

"We hope this information will raise awareness and help councils and government to know where to conduct detailed investigations when developing adaptation strategies to protect our coastal communities," said Dr Stephens.

The maps are also intended to help the financial industry, national infrastructure, and service providers to risk assess their portfolios.

"It's difficult to make decisions about the future if you can't see it - these maps provide a window into the future," said Dr Stephens.

Coastal flooding is

particularly likely when high tides, storm surges and large waves occur simultaneously. At these times, low-lying areas are inundated when high seas overtop or even break barriers, and cause rivers to back up inland.

This can destroy property, infrastructure, and be a danger to life, as well as having severe impacts on the natural environment and ecosystems.

"With much of our major infrastructure and roughly 65% of New Zealanders living within 5km of the coast, this is an issue that will impact many of us, so we must be aware of what's coming and be prepared to adapt.

"These maps are not designed for assessing exposure to individual properties, however. Many councils have more detailed maps for that purpose. The advantage is that they fill in gaps for areas of the country that don't currently have this data available, they provide nationwide information, and they include many scenarios of sea-level rise," said Dr Stephens.

The maps were used in new research that examined New Zealand's increasing exposure to coastal flooding with sea-level rise.

The research found that small amounts of sea-level

rise will drive a rapid increase in cumulative flooding from increasingly frequent coastal-flood events-nationally, and 30% more land area would be regularly flooded after 0.3m

relative sea-level rise. "By 2065, there could be 0.4m of sea-level rise, based on the current trajectory, or sooner where the landmass is subsiding," said Dr Stephens.

Headstone Warehouse
WHERE YOU GO FOR HEADSTONES

33 High Street,
HAWERA - Ph: 06 278 5518

209 Coronation Ave,
NEW PLYMOUTH - Ph: 06 759 9975

www.HeadstoneWarehouse.co.nz
 EXCEEDING THE STANDARD SINCE 1914

Value Farm Sheds

Clearspan options with steel rafters, poles and timber. Visit our website for further details. Give us a call to get an estimate and plans!

VALUE Building Supplies
 BuildLink Buy Better Build Better

1 KATERE RD, NEW PLYMOUTH PHONE: 06 759 7435
 JAMES ST, INGLEWOOD PHONE: 0800 245 535
www.valuebuilding.co.nz

CARING FOR YOUR COMMUNITY

INGRAM'S
 PROUD TO BE LOCALLY OWNED & OPERATED

PHONE (06) 278 4786
 Bin & Skip Hire

OPUNAKE FIRE SERVICE

Awards for distinguished service are richly deserved

We recently held our 79th AGM where several of our members received awards. Congratulations to Kevin Joyce (35 years service), Colin Andrews and Kevin Corrigan (both 21 years service) who each received 7 years bars for their Long Service Good Conduct Medals (LSGC). The LSGC Medal is a Queens medal and was presented by Taranaki Group Manager Clive Lennox. Also receiving 2 year bars for their 5 year UFBA Medal were Michael Corkill (13 years) and Steven Bennett (7 years). Leah Scott was presented with the most conscientious member trophy, Chris Harvey won the single person hose running competition trophy, with the two-person hose running trophy going to Chris Harvey and Levi Davis. The trophy that no one wants to get, (The

biggest muck up trophy) went to Steven Chisnall. In my CFO report I talked about how lucky our Brigade is to have the support of the local community. Thank you to all the individuals, businesses and groups from around Opunake who have supported us over the last 12 months. I also thanked our fire fighters, support crew and partners, who give up a lot of their time not only responding to incidents, but also trainings, fire education, community events and fund raising. At a recent training night, we were shown the new water tankers that will now be serving Taranaki. The bigger 13,000 litre water tankers are no longer in use, and a smaller 6000 litre is now the preferred option. The tanker will now turn up and dump its 6000 litres into a portable dam



From left, Clive Lennox (Group Manager) presenting Colin Andrews, Kevin Joyce, and Kevin Corrigan with bars for their LSGC medals.

then ferry water backwards and forwards to the dam. With recirculated water and limited water supplies in rural areas, these tankers are sometimes our only water source.



LEFT: Setting up the new portable dam.

Andrew Pentelow (CFO)

Male driver airlifted from accident scene

On Tuesday last week emergency services attended an accident on Ihaia Road after a car rolled trapping its sole male occupant. The vehicle was heading north around 11am and swiped a trailer load of firewood which was parked near the crest of a hill. The car then rolled some distance downhill, ending up on its side across the northbound lane.



The scene of the accident in Ihaia Road.

Two fire engines as well as St John Ambulance and police attended the incident. Members of the Opunake Fire Brigade used cutting equipment to cut through the roof and extricate the driver, with a rescue helicopter

landing in a nearby paddock to airlift the patient to hospital. A police spokesperson said

police had been notified of a single vehicle crash

on Ihaia Road, Opunake at about 11.15am. The vehicle was initially reported to be blocking the road. One lane was later reopened and some debris and oil

was cleared from the road before it was fully reopened at about 1.30pm. Enquiries were being made into the circumstances of the crash.



SCHURR IRELAND

CHARTERED ACCOUNTANTS

NEW PLYMOUTH

ELTHAM

p. 06 759 0105

p. 06 764 8305

www.schurrireland.co.nz



Cabinet Making, Glass Supplies & Custom Joinery Solutions

Donald & Ian Murray

06 764 8616 027 242 8379
027 348 9445

136 High Street, Eltham
eltham.bs@gmail.com

www.elthambuildingsuppliers.co.nz



- *New homes
- *Alterations
- *Rotary cowsheds
- *Herringbone dairy sheds
- *Concrete driveways
- *Bridges
- *Pre-cast silage pits
- *Hay barns & implement sheds
- *Concrete races
- *Repair work

We are a licensed building practitioner and Master Builders member. Experienced in the design and consent process.

0274 442 703



HEL RIMU
THE STANDARD IN ELECTRICAL

0800 200 210
helrimu.co.nz



Progress at Dawson Falls

There is definite progress at Dawson Falls, with the new accommodation facility scheduled to be completed by mid 2024. The rebuild is being carried out by Livingston (0506 WE Build).

The building site is fenced off and a sign states Te Rere o Kapuni. Along with the scheduled opening there is also a website www.terereokapuni.nz (Live from August 2023).

The Site Manager is Josef Harris and he explained that the concrete foundations and a block retaining wall should be in place in 6-8 weeks. There was a lot of timber framing, which was visible on the perimeter of the building site.

Josef pointed that there were a few challenges to be dealt with, such as the frequent rainfall. "Every time it rains it puts us back about three



days." Also, "Access can be quite tricky." He mentioned a 15 tonne digger, which had to negotiate the route to (and from) the building site. Josef said a local archeologist had been interested in the site, as some interesting items have been found such as "turn of the century wine bottles," early rubbish dumps, an old smoking pipe and even tramping boots.

LEFT: Site Manager Josef Harris holds an ancient wine bottle, which has been found on the building site.



LEFT: This recently erected sign informs the public that the building will be opened in mid 2024.

*HEADSTONES * GRANITE PLAQUES
*CERAMIC PHOTOS & PLAQUES

STONE CREATIONS NZ

stonecreationsnz@gmail.com
www.stonecreationsnz@kiwi.nz

0508 763 84 37
Forever Memories Your Way

Creative Centre & Showroom
310 Dover Rd, Okato

Dave Coxhead
Owner Operator
0274 795 749
dave@plumbingmaintenance.nz
www.plumbingmaintenance.nz
"Your new local plumber"

- PLUMBING
- DRAINAGE
- ROOFING
- HOT WATER SYSTEMS
- ALTERATIONS
- DOMESTIC HOUSES
- WOOD FIRES
- ALL MAINTENANCE

"Over 40 years experience in the trade"

Taxing urea better than He Waka Eke Noa

Greenpeace Aotearoa says the agriculture industry has "undue influence" over the Government's agricultural emissions policy, and that "predatory denial and delay" stalled the development of plans to price and reduce climate pollution.

Greenpeace climate and agriculture campaigner, Christine Rose, says "the Government's indication that the introduction of a urea tax is not under meaningful consideration because industry doesn't

support it, is indicative of a wider problem.

"The agriculture industry has too much influence over the Government's climate policy. Ongoing delays with emissions pricing have been manufactured by Big Dairy so that they can continue polluting the climate without repercussions, while the rest of us pay the price."

"This year will be a climate election, and we expect all political parties to put forward strong policies to rapidly reduce climate pollution from agriculture.

We need a political climate shift, where urgent climate action is the priority - and that means tackling Big Dairy, New Zealand's worst climate polluter," says Rose. "The agri-industry's emissions reduction scheme, 'He Waka Eke Noa', has never been a realistic way to cut climate pollution. We need bold, smart, and ambitious policies that enable us to cut methane emissions by 30% by 2030, in line with the Global Methane Pledge. That must include a full phase-out of

synthetic nitrogen fertiliser, through a sinking lid policy." "Everyone has the right to a safe and stable climate and healthy environment," says Rose. "The Government must regulate the intensive dairy industry now, because Big Dairy cannot be allowed to take that right away from us."

IHAIA MOTORS
for
A GRADE REPAIRS

- Tyres
- Batteries
- Lubes
- W.O.F
- Panel beating
- Painting
- Farm Bikes
- LPG
- All mechanical repairs
- Insurance work
- Radar Detectors

AT COMPETITIVE PRICES.
Tasman St, Opunake
Ph (06) 761-8502

zodiac signs
Est. 1978
From Design to Completion

Sign Making • Vehicle Graphics • T-Shirts
Logo Design • Business Cards • Building Signage

www.zodiacsigns.co.nz | 06 278 6224

Taranaki's hearing care specialists are open and hear for you!

At Central Audiology, we are doing everything possible to ensure that our clinics are safe for you. As locals, we really care about our community.

Our services:

- Hearing assessments
- Tinnitus
- Hearing aids
- Wax removal (microsuction)

100% Taranaki
owned & operated since 1998

CALL US: 0800 751 000
Stratford c/o Avon Medical Centre
Hawera cnr Victoria & High St
New Plymouth 20 Robe St

Central Audiology
TARANAKI

Regions out in the cold under winter health plan

Taranaki and Whanganui residents are out in the cold under Labour's winter preparedness health plan.

The 24-point plan aims to tackle workforce shortages, wait lists and winter pressures on the country's

health system. But Taranaki-King Country MP Barbara Kuriger and National candidates Carl

Barbara Kuriger MP for Taranaki-King Country Backing Rural and Provincial New Zealand

Inglewood Office
80 Rata St, PO Box 124,
Inglewood 4330 • 06 756 6032
Kuriger.Inglewood@parliament.govt.nz

Te Awamutu Office
53 Mutu St, PO Box 302,
Te Awamutu 3800 • 07 870 1005
Kuriger.Teawamutu@parliament.govt.nz

King Country Virtual Office
021 856 793
Kuriger.Kingcountry@parliament.govt.nz



Authorised by Barbara Kuriger MP, Parliament Buildings, Wgtn.



BARBARA KURIGER MP
TARANAKI-KING COUNTRY

Bates (Whanganui) and David MacLeod (New Plymouth) say it is yet another ill-conceived health policy by Labour because it excludes half of New Zealand. "Taranaki, Whanganui, Waikato, Tairāwhiti, Hawke's Bay, Wairarapa, South Canterbury, Nelson, Marlborough and West

Coast are all excluded, so how is this going to work? Our only inclusion is using the telehealth service," says MacLeod.

Bates says the exclusions mean GPs will also not be able to use the extra powers under the plan. "Nor will pharmacies be able to utilise the minor ailments option giving them the ability to treat people with these conditions."

"Once again we have a rushed policy that won't deliver better outcomes for New Zealanders especially as half of us are missing," says Kuriger.

"We know one of the biggest issues is the critical need for the health professionals like nurses and midwives. That's why we wanted immigration settings opened at the start of

2022 and why addressing that is a main feature of our own new health policy.

"National will pay nurses' and midwives' student loan repayments if they enter a bonding agreement of five years and make New Zealand a more attractive destination for international nurses.

"National will also fix the economy so that we can invest in our front-line staff to give them the resources they need to deliver better health outcomes for all New Zealanders."

Barbara Kuriger
MP Taranaki-King Country

Authorised by B Kuriger,
Parliament Buildings,
Wellington

Support for today building for tomorrow

Budget 2023 is now in full swing, which sets out more support for today and the next steps in our plan to build for tomorrow. I wanted to make sure that you'd heard about a few key initiatives, including a cost of living package to ease the pressure on people here in Opunake.. This Budget provides practical cost of living support across some of the core expenses facing New Zealanders – childcare, healthcare, transport and power bills. It will help to make things a bit easier for families, students and older New Zealanders by reducing or removing some of the costs they currently face. Millions of Kiwis will pay a little less as a result. We're helping parents stretch their budgets a little further, by making childcare



GLEN BENNETT
MP FOR NEW PLYMOUTH

cheaper with 20 hours free ECE for two-year-olds. This will be a major saving for families and will reduce barriers for working parents to take on more hours if they can.

We're helping with health costs by removing prescription charges for medicines. Removing the \$5 co-payment will make it easier and cheaper for Kiwis to access the medicines they need, having a meaningful impact for many households, particularly those who have multiple prescriptions to fill on a regular basis.

We're permanently cutting the costs of public transport for young New Zealanders, making it cheaper to get to school and tertiary study. We're providing free fares on buses, trains and ferries for children aged 5 to 12 and half-price discounts for all passengers aged 13 to 24 from July this year. Free fares for kids under 13 could see savings of \$30 a week for families with two children.

We're also reducing power bills by making Kiwi homes more energy efficient. In addition to the Winter Energy Payment, we're helping to reduce power bills by hundreds of dollars a year through the Warmer Kiwi Homes programme. We're

nearly doubling the existing retrofit programme that has reduced electricity use by on average 16% over the winter months.

These initiatives help Opunake households now, while also delivering long-term education, health and climate benefits. They're win-win.

Budget 2023 also includes a massive boost to our country's infrastructure which has been tested during the recent flooding and cyclone. That's why we've allocated significant funds to build back better with greater resilience, to protect communities from increasingly severe and unpredictable weather events.

It's a practical Budget that does the basics well and makes investments where they are needed most. But we need to do more than just respond to the challenges of today, we also need to build for the future. That's why we're continuing to make targeted investments in areas that are critical to grow the economy and lift productivity.

Investing in infrastructure, skills, science and technology supports every area of the economy. It's how we support people into work, drive higher wages for Kiwis and build a stronger, inclusive and more resilient economy.

You can find out more about what Budget 2023 means for you and your family here: LABOUR.ORG.NZ/BUDGET2023

Glen Bennett
MP for New Plymouth.

Debbie Ngarewa-Packer List MP based in Te Tai Hauāuru

Staying connected to our communities, iwi, marae, hapū and whānau. We are here to tautoko.

0800 WHAEA DEB
debbie.ngarewa-packer@parliament.govt.nz



Authorised by Debbie Ngarewa-Packer, Parliament Buildings, Wellington.



HERE TO HELP



Waea mai
06 348 1020 • 0800 HARETE
Level 1, 122b Victoria Avenue
Whanganui • HareteHipMP

Harete Hipango
National Party List MP

Authorised by Harete Hipango, Parliament Buildings, Wellington.



Dame Jacinda Ardern humbled by honour

Former prime minister Jacinda Kate Laurell Ardern has been made a dame in King Charles Birthday Honours. Her full title is Dame Grand Companion of the New Zealand Order of Merit and she received the high honour for meritorious service to the Crown and Nation.

"I'm incredible humbled," she responded. She also admitted, "I was in two minds about accepting this acknowledgment. So many of the things we went through as a nation over the last five years were about all of us, rather than just one individual."

Prime Minister Chris Hipkins commented, "Having served as prime minister from 2017 to 2023, Dame Jacinda is recognised for her service to New Zealand during some of the greatest challenges our country has faced in modern times."

He was referring to such crises as the 2019 terrorist attack in Christchurch, the Covid 19 pandemic and the White Island volcanic eruption.

The prime minister continued - referring to the "intense challenge for our fortieth prime minister ... during which time I saw first hand that her commitment to New Zealand remained absolute."

Dame Jacinda was leader from September 2017, aged 37, until January 2023 describing her prime ministerial role as "The most



Dame Jacinda Ardern

challenging and rewarding role of my life." However, by the first month of this year she declared "I no longer have enough fuel in the tank to continue." Since then she has also resigned from parliament, where she arrived firstly as a List MP in 2008 (2008-2017) and later an electorate MP holding the Mt Albert seat from 2017 until her retirement.

She is heading to Harvard University to complete two fellowships, but will return to New Zealand late this year – missing the October general election.

Carl Bates National Party Candidate for Whanganui

Your strong voice for Farming in the Whanganui Electorate



Authorised by C Bates, 41 Pipitea St, Wellington.

The next issue of the Opunake & Coastal News is due out on the 29th of July. Let us know if you would like to contribute.

Aviation emissions need urgent action

Aotearoa New Zealand has particularly high aviation emissions - it ranks sixth in the world for per-capita emissions, and its total emissions rose 116% from 1990 to 2019. This rapid growth path is incompatible with the Paris Climate Change Agreement. While technological innovations have been proposed to reduce emissions, researchers say that none of these will lead to a significant reduction in the short to medium term, and that the growth

in air traffic seems likely to defeat even the most ambitious technological improvements. They say we need a national aviation action plan that includes avoiding trips or shifting them to lower impact modes of transport, and there needs to be urgent action to ensure that aviation emissions remain permanently below 2019 levels.

Journal of the Royal Society of New Zealand



OPUNAKE & COASTAL NEWS

LIKE ONE OF OUR PHOTOS?

Did you know that photos that are published in our paper are available to purchase?

Call in and see us today.

Ph/Fax: 06 761 7016 - 23 Napier Street, Opunake or e-mail us: ads@opunakecoastalnews.co.nz

Prices from:

Postcard size \$7 - Medium size \$10 - A4 size \$18



BUDGET 2023

SUPPORTING TODAY BUILDING TOMORROW

BUDGET 2023 IS

DELIVERING

FOR NEW PLYMOUTH

HELPING WITH HEALTH COSTS BY REMOVING THE \$5 CO-PAYMENT FOR PRESCRIPTION MEDICINES.

PERMANENTLY CUTTING THE COSTS OF PUBLIC TRANSPORT FOR YOUNG KIWIS.

REDUCING THE COST OF EARLY CHILDHOOD EDUCATION FOR PARENTS BY EXTENDING 20 HOURS FREE ECE TO TWO-YEAR-OLDS.

REDUCING POWER BILLS BY MAKING HOMES MORE ENERGY EFFICIENT.

Glen Bennett

MP for New Plymouth

Glen.BennettMP@parliament.govt.nz



Funded by the Parliamentary Service. Authorised by Glen Bennett Parliament Buildings, Wellington

The Crafty Fox now in new premises and a co-op

The Crafty Fox now in new premises and a co-op
 Oakura's Crafty Fox has recently undergone several changes.

The popular gift shop has moved to the Village Mews in Oakura and, now called The Crafty Fox Co-op, will be part of a co-op organized and run by Louise Murray.

"I wanted to start a co-op," says Louise, adding that craftspeople who make craft ware and original art and clothing will be part of the gift shop.

The arrangement is ideal for Tony who, with partner John Sole, has owned the Crafty Fox for 21 years. Sadly, John passed away just before Christmas in 2022.

As Tony has other part time jobs, including running Ngamamaku Gardens in Oakura, a popular wedding venue, he didn't have time to



Tony and Louise inside the new premises.

"Natural creams and lotions made in New Zealand with New Zealand products have always been popular," said Tony, adding that Louise's range of toiletries will enhance and widen the selection.

"My first love was fashion," says Louise, who is selling some of her own designs along with other locally made clothing. There's also a range of children's books by New Zealand authors.

Louise said there are plans to hopefully have tables out the front and an independent coffee cart alongside, which they will work in with.

She added they see the shop as "evolving over time."

Tony said they were looking for more people making quality products to join the co-op. He added that Louise retains the right to assess whether it fits the shop and the ranges we need."

The Crafty Fox Co-op will be open 6 days a week from 9:30 to 4:00 pm, closed Tuesdays.

additionally run the shop. He will, however, continue to have an active interest in the co-op. A lot of the stock in the new shop is transferred from the former Crafty Fox. "There's now a much wider selection of items," said Tony. He added "John would be happy and smiling that it's still going, and hope that all our loyal Coast customers continue to support the new shop."

Louise, who will manage the co-op, says they have currently ten people

contributing to it.

"It's still predominantly Kiwi made and New Zealand themed," remarked Tony, "and that was always the philosophy of the Crafty Fox since it was founded.

We have a great selection of New Zealand greenstone by New Zealand carvers and also a range of toiletries which are popular."

Louise makes her own range of natural products.



Now selling clothes.



Tony Barnes and Louise Murray in front of the Crafty Fox Co-op.

Vitamin B12 / folate:

Levels are between 130 to 650pmol/L
 Inflammatory gastric and intestinal problems plus liver dysfunction are common causes of vitamin B12 folate deficiency.

Conditions associated with B12 and folate deficiency include:

- Depression
- Excessive tiredness,
- Breathlessness,
- Listlessness,
- Pallor
- Poor resistance to infection.
- Back pain
- Tingling in fingers
- Poor memory
- Unsteadiness or loss of balance
- Speech difficulties
- Tingling in arms and legs
- Mood swings
- Infections, flu or herpes
- Decreased reflexes
- Ringing in the ears

Other symptoms can include a smooth, sore tongue and menstrual disorders.

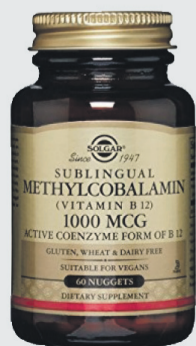
Prolonged B12 deficiency can lead to nerve degeneration and irreversible neurological damage.

Anybody consuming alcohol should look at their B12 levels or if you take laxatives or antacids regularly.

Older people could also benefit from this vitamin as the intestinal situation changes as you age, and many people older than sixty have difficulty extracting the vitamin from ingested food since the correct stomach acids are not present.

Email healthshop36@xtra.co.nz

Levels of B12 in a blood test go from 135 to 835, it's a huge range, if you suffer from depression these levels can be higher, for me this is certainly a happy pill.



The Health Shop Centre City | 06 758 7553

THE CRAFTY FOX

OPEN IN A NEW LOCATION

CO-OP

Mon 9.30am - 1pm
 Tues Closed
 Wed - Sun 9.30am - 4pm

Ground floor - The Village Mews (opposite the hall)

Now owners of Oakura Pharmacy enjoying the challenge of owning their own business

Five months into the job the new owner of the Oakura Pharmacy Simon Bush says they are enjoying owning their own business. His wife, also a pharmacist, is currently on maternity leave and in the future they may share the role but for the moment Simon is working full time.

Other than the new owners there's been few changes. The staff have been retained plus they've appointed a new person.

"They're great. They know the community and they're great workers and great people," says Simon.

Simon graduated from Auckland University where he met his wife and, after completing the 4 year degree, the couple went to Christchurch. Seven years ago they moved to New Plymouth where he has been mostly working for Robertsons.

It's his first business and Simon is clearly relishing the role. "That was one goal when I decided to do pharmacy, I wanted to get into business." Originally from Blenheim, his father is the owner of Bush's Honey, a business founded by Simon's great grandfather 110 years ago. Simon is extremely allergic to bees so the honey business was not for him, but "I liked the idea of running your own business."



Simon and Deema Bush outside the Oakura Pharmacy.

His father has recently planted out Manuka and will be producing Manuka honey

which is highly prized with health benefits.

They sell Bush's Honey in

the Oakura Pharmacy. He adds in every pharmacy he's worked in they have sold

Bush's Honey and quips "I'm an unpaid salesman for Bush Honey".

Simon says they've tried to keep the Pharmacy much the same including the staff and says he wants to get a feel for the place. Long term they may renovate the building and also introduce new services to better service the community.

Pharmacists are tending to offer more services generally and these days routinely do vaccinations and some

medical consultations. As well they can dispense Viagra, blood pressure medication, emergency contraception and melatonin - the latter under very strict criteria.

"There's lots of new services," he says. The trend is to have pharmacists help relieve the health service.

"It's the first place that people go to, the first port of call," says Simon adding that they work in closely with the doctor.



The Oakura Pharmacy has a large gift section.



Plus a wide range of cosmetics for women ... and men.

Your soap could be making you a mozzie magnet

Are you the mosquito-magnet in your friend group? It could be your natural smell combined with your soap, according to international researchers who suggest trying coconut-scented soap to become more repellent. The team looked at how attractive participants were to mosquitoes when they hadn't washed, compared to washing with four soap brands: Dial, Dove, Native, and Simple Truth. Despite all the soaps containing limonene, a known mosquito repellent, the team found that Dove and Simple Truth increased the attractiveness of some (but not all) volunteers, while washing with Native soap tended to repel mosquitoes. coconut soap if they wanted to repel mosquitoes.

We welcome your contributions
Please send to
editorial
@opunakecoastal news.co.nz



- Steel
- Aluminium
- Valves
- Fencing Products

- Reinforcing
- Fittings

Cut to length ~ Daily deliveries Taranaki Wide

Steel

For all your requirements

4 Oropuriri Road
New Plymouth
06 755 2510
sales@npss.co.nz
www.npss.co.nz

Knitters and Crocheters gain recognition

Among the North Taranaki individuals and groups being recognised at the Volunteering New Plymouth Volunteer Recognition Awards was the sole recipient from South Taranaki, the Eltham Knitters and Crocheters.

Receiving the certificate on behalf of the group at the awards which were held on May 27 were Mandy Scott and Daphne Presland.

The group meet on Tuesday mornings at the Eltham Anglican Church Hall. At any given session there are about 10 people

putting together items which include teddy bears, blankets, quilts, beanies and slippers which are then sent off to deserving causes. These have included the Salvation Army, Foodbank, Women's Refuge, Plunket, local schools, the creche at Stratford High School, as well as packs for police.

The group were nominated by Tania Hanlon of Seasons for Growth, a peer support group programme for young people who are going through grief or loss. Tania regularly collects teddies which the group have made

and then passes them on. Daphne says they get a lot of wool donated to them and they always welcome more. Mandy says anyone is welcome to join.

"If they haven't got needles we can set them up," she says.

Daphne has been a member for the last four years. Mandy was one of the earlier members. She says she joined "a week or two after it started," after seeing a notice in the window of the Eltham Library promoting the group.

"It sort of started and then



Members of the Eltham Knitters and Crocheters. From left. Anice Clement, Leonie Aiken, Rose Vollans, Frances Steffert, Lyn Murphy, Daphne Presland, Lyn Old, Phyllis Ushaw.

Continued page 13.



Stratford
Knit and Sew

Haberdashery, quilting materials and supplies. Wool, patterns and needles. Embroidery and cotton.

Open:
10am-4pm Mon-Friday
10am-12pm Saturday

Phone: 06 765 4181
202 Broadway, Stratford
www.stratfordknitandsew.com

Gardening with Palmers Gardening Centre



How to grow microgreens



Microgreens are a nutritious and easy-to-grow option. These tiny greens offer vibrant colours, textures, flavours, and nutrients to various dishes. In fact, they contain five

Microgreens.

times the amount of vitamins and carotenoids compared to their mature counterparts, making them a healthy choice.

Microgreens are one of the quickest food crops to grow, making them ideal for those with limited time, space, or gardening skills.

The Mr Fothergills Microgreens Growing Tray is an easy way to grow microgreens - no soil required, just add water.

To grow microgreens, follow these simple steps. Fill the tray with water and

place the black growing trays on top.

Place a thin layer of paper towel onto the trays and then sow the seeds onto this. Mist with water and cover with foil to prevent evaporation.

Once the seeds have germinated, remove the foil and move the container into the light.

Continue misting the seedlings 2-3 times a day with a mixture of water and seaweed solution.

Harvest the microgreens when they reach a height of 2-5cm, approximately 7-21

days after sowing.

Use sharp scissors to cut the stems just above the paper towel and wash them in cool water.

Microgreens are best used fresh and have a short shelf life, but they can be stored for several days in sealed zip-lock bags in the refrigerator.

By following these steps, you can easily grow microgreens at home, adding freshness, taste, and nutrients to your meals in a short period of time.

Corkill SYSTEMS LTD

5 TASMAN ST, OPUNAKE
FREEPHONE: 0800 107 006 PH: 06 761 7531 - FAX 06 761 7336

Silent Diesel and Industrial Tractor Mount Generators For Dairy Sheds, Houses, Pump Sheds and Commercial Sites

Tractor Mounts Features:

- Supplied with weather proof cover
- Dials facing cab (one man operation)
- Heavy Duty Driveshaft
- Heavy Duty Construction
- 1000RPM Direct PTO Driven (no gearbox or belts)
- Backup and Repair Service for all Generators



Sizes to suit all situations

A full range of cabling and outlet options to suit your personal requirements



Check out our new website
www.corkillsystems.co.nz

Palmers knows plants

At Palmers, you'll find a Garden Centre full of passionate gardeners who are ready to share the joy of good living with you. We are all about creating beautiful spaces, at our place and at yours. We're locally owned and operated, packed with quality products and expert advice for your home and garden.

CAFÉ BOTANNIX

The ideal setting to stop in for a delicious meal, made in-house with seasonal garden produce. Our tranquil garden setting and covered outdoor courtyard is the perfect place to relax after meandering through the garden centre.

Classic hearse wins at Holden Nationals



Glenn Rogers and the hearse.

Glenn Rogers of South Taranaki Funeral Services, Hawera was delighted that their 1976 Holden Statesman hearse won its class at the 17th Holden Nationals held in Palmerston North over Easter weekend (7-9 April). The classic hearse, which is understood to be one of only

twelve worldwide and the only one in New Zealand, won the Special Interest Vehicle Class. The venue for the event was the Fly Palmy Arena at 61 Pascal Street, Palmerston North. Glenn, a keen Holden vehicle enthusiast, is a financial member of Holden

Club Central.

Glenn was impressed with how the event was run. "It was well-organised," he comments.

A huge amount of work went into ensuring the hearse was in optimal show condition. As black paint shows every tiny imperfection, before repainting some extensive panel work restoration was carried out by Prasad Lalantha (panel work) and Paul Reid (painting). The car was then hand glazed and some further adjustments were also carried out by Chris Dawson, owner of Ironworks in Mokoia.

"They worked very hard and the work they've done is absolutely exquisite. They are very skilled," enthuses Glenn. He concludes,

"We're very happy with what they've done."

He also had a word of praise for Dave Young of Hawera who, as an official of the Holden Federation of New Zealand, organised the brand new trophies for the show, including the one Glenn proudly holds. He also located sponsors for

each category. Glenn is looking forward to the next Holden Nationals which he believes is to be

held in the South Island in 2025 – they are held on a biennial basis.

Massey graduate



Jordan Quinnell, formerly of Ōpunakē, and now living in Palmerston North recently graduated from Te Kunenga Ki Pūrehuroa, Massey University, with a Master of Māori Visual Arts with Distinction. He is the son of Carmen James and Dean Quinnell.

Knitters and crocheters gain recognition

Continued from page 12.

it grew," she said. Receiving the award is a first for them.

"We never ever thought about anything like that," says Mandy. "It's just a lovely group and we like helping people. We just want to be another group in the community where people can be connected."

She says one member has made 60-70 teddy bears, as well as singlets for premature babies. Another member has been making toys while going through chemotherapy treatment herself. "She loves our group," says Mandy.

I'm prepared. For my whānau

CALL US TODAY
06 278 8088 - All hours

SOUTH TARANAKI FUNERAL SERVICES

Craig Corrigan ELECTRICAL OPUNAKE

- All Cowshed Wiring
- Farm Control Systems
- Domestic Wiring
- Electrical Inspections
- Effluent System wiring

Ph: Craig on 027 207 7775
craigcorriganelectrical@gmail.com

SLEEP LIKE A KING

50-70% OFF

All Queen, King, and Super King Mattresses + 20% off all King Slat Beds
+ Selected Queen Bed Sets for \$999 + 20% off Haumoana Bar Stools

Furniture Zone
make your house a home

WWW.FURNITUREZONE.CO.NZ

298 DEVON STEET EAST, NEW PLYMOUTH 4312 | (06) 215 3020
*TERMS AND CONDITIONS APPLY WHILE STOCKS LAST IN STORE | VALID UNTIL JUNE 30TH

**Proud to support Coastal Care
with our experienced electrical team**

Sinclair

**ELECTRICAL &
REFRIGERATION**

31 Tasman Street, Opunake | Phone 06 761 8084

Coastal Care update



Coastal Care Administrators Kim Gatenby and Aretha Macadam outside the newly refurbished space for Lisa Keen Audiology.

“The power of community to create health is far greater than any physician, clinic or hospital.” – Mark Hyman
I was reminded of this quote during our fundraising and building project and it feels like we were able to have our cake and eat it too as we not only were able to create extra rooms for all the services we have attracted to CoastalCare but also developed extra space for the ever-expanding Opunake Medical Centre and the services they offer.
Its certainly taken a whole lot of community to make this happen but we are super pleased with the job done. We have gained five extra rooms and these include:

Dedicated space to Remington, our visiting Chiropractor here on Wednesdays.
A dedicated soundproof space for Lisa Keen our visiting Audiologist also here on Wednesdays.
A dedicated space for Opunake Districts Foodbank which has grown in its requirement's.
A dedicated space for Matthews our visiting Optometrist here every second Thursday.
This has freed up a room for the Opunake Medical Centre in line with the other rooms they lease and now houses Alex Neil their Health Care Assistant.
We were pleased to be

able to use all local tradies and a massive thank you to Shaun Stanley and his Team at Taranaki Building Limited, Sinclair Electrical and Refrigeration, Gibson Plumbing, Cambie Architecture and Chubb. Together these organisations did a wonderful job at reshaping the areas that had low utilisation to where it now looks like part of the original building work. Well done and thank you for being part of the “Power of our Community”.
Of course, money is the currency we work in and

Continued page 15

SAVE 18%*
OFF OUR STANDARD ADVERTISING RATES
Call our Marketing team on
06 761 7016
to find out how
Quote this number: 1807123

* WHEN YOU PLACE AN AD THIS SIZE IN EACH ISSUE
OF THE **OPUNAKE & COASTAL NEWS** FOR 12 MONTHS

OPUNAKE & COASTAL NEWS FOR ADVERTISING THAT WORKS!

Some of the regular services we currently have running are:

TAYLOR DENTAL PRACTICE
Every Thursday and 2nd Friday

LISA KEEN AUDIOLOGY
Every Wednesday

NEW PLYMOUTH PHYSIOTHERAPY
Every Tuesday and Friday

TARANAKI CHIROPRACTIC
Every Wednesday

COUNSELLORS
Gwenyth Richards 06 278 6399
Leonie Landsheer 027 559 0982
Alex Jones 021 0816 3248
Manuka Matthews 027 239 5896
Steph Vaitupu 021 090 79597

MATTHEWS OPTOMETRISTS
Twice monthly on a Thursday

TARANAKI PODIATRY
Every 2nd Wednesday of the month

BUDGET ADVICE
Wednesday fortnightly

HIP
Every Tuesday

DID YOU KNOW?
CoastalCare offers for hire private, well-appointed room's for meetings, training opportunities and social gatherings.



Permanently residing in the building are:

OPUNAKE PHARMACY,
OPUNAKE MEDICAL CENTRE,
ST. JOHN AMBULANCE, PLUNKET,
TDHB SERVICES, COASTAL PRINTERS, FOODBANK



For a full list of services & happenings here

Find us on Facebook

or visit us at www.coastalcare.co.nz
CONTACT ARETHA LEMON
Facility Manager on 06 761 8488



DRIER. CLEANER. HEALTHIER

SOUTH TARANAKI & WANGANUI

Chem-Dry is the world's largest carpet cleaning company
24 HOUR FLOOD & URGENT STAIN REMOVAL

- ✓ Carpet and upholstery cleaning and protection
- ✓ We specialise in stains, odours & hard to clean carpets and fabrics
- ✓ We move the furniture
- ✓ P.U.R.T. Pet urine removal treatment
- ✓ Free quotes, residential and commercial

0800 22 78 22

email: wanganui@chemdry.co.nz mobile: 0272 999 605

www.chemdry.co.nz

Independently owned and operated under a Chem-Dry License Servicing
"THE SOUTH TARANAKI AND WANGANUI REGIONS"



TARANAKI BUILDING LIMITED
0278186385

SHAUN STANLEY

**181 Tasman Street
Opunake**

PH: 027 818 6385

Coastal Care update



The soundproof room for Lisa Keen Audiology.



The community lounge space available for meetings.

Continued from page 14
 we are eternally grateful to many people who provided the funds to ensure phase one and two have been completed. A huge thank you to all those farmers who provided donations and/or cull cows as this was our starting place and ensured we were able to secure other funds (I must say as a townie I was super surprised how much the cull cows raised). Other funds were provided by South Taranaki District Council, Pub Charity, Aotearoa Gaming Funds, Opunake St Paul's Co-operating Parish Op Shop and Toi Foundation.

So again, thank you to our wonderful community for the extra space we now have. Watch this space for updates as this was phase one and two of a four phase project – we are still to build an extra-large room in the eastern courtyard and expand Opunake Pharmacies footprint to accommodate their extra needs. If you would like contact details for any services mentioned or to know more about Cull Cows for our build project then please contact us on 06 761 8488.

*Aretha Macadam
 Facility Manager*

163 Glover Road, Hāwera
 cambiearchitectural.co.nz
 hello@cambiearchitectural.co.nz

AD NZ Architectural Designers New Zealand

Facebook Instagram

Licensed Building Practitioner

We welcome your contributions
 Please send to
 editorial
 @opunakecoastal news.co.nz

gibsonplumbing LTD.

CERTIFIED

Plumbing, Gasfitting and
 Drain Laying

Plus! Roofing, Wood Fires and
 other Heating Solutions

06 761 8757 027 445 7164
 gibson.plumbing@xtra.co.nz

**Come hear what
 you've been missing**



**100% Kiwi
 Owned**

Proud to be part
 of your local
 community

Your local hearing expert, **Lisa Keen**, is here to help you hear all the sounds on the job. Don't wait to get the quality care you deserve. Call today to start your journey with better hearing.



Call (06) 757 8380

280 Devon St West
 New Plymouth

Lisa Keen, AuD, MNZAS

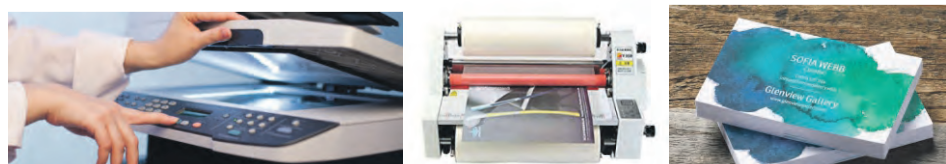
**LISA KEEN
 audiology**

COASTAL
Printers
 COPY PRINT DESIGN

Your local Print Shop for all your printing needs!

OPEN WEDNESDAY, THURSDAY, FRIDAY - 9am - 4pm

26 Napier Street Opunake in the CoastalCare Building



Photocopying, Passport Photos, Business Cards, Flyers, Brochures, Logo Design, Laminating, Binding, Typing Services, Photo Repairs, Photos onto Canvas/Glass Prints, Advertising Posters, Document Scanning, Invitations, Thank You Cards, Raffle Tickets, Personalised Labels, Stickers/Labels and more....

PH: 06 761 8037 Email: cavco@xtra.co.nz

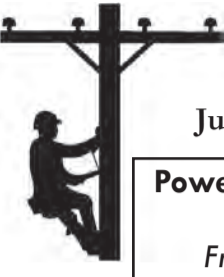
POWERLINE FAULTS AND SERVICING

From a fuse or broken insulator replaced to a complete powerline rebuild

Call: **TOP OF THE LINE ELECTRICITY SERVICES**

Greg Lewis: 027 453 0326
Justin Robinson: 027 445 9162

Powerline Servicing Specialists
Free line inspections
Free advice | Free quotes



Keeping in touch with southern rohe

Manaia's continuing lack of a community facility again featured at the Taranaki Coastal Community Board's latest meeting held at Oaonui on May 31. At the same meeting two community halls were applying for funding from the board.



The Manaia War Memorial Hall has been closed since 2016 for failing to reach earthquake strengthening standards. Manaia received a second blow two years later when the Sports Complex also had to be closed for failing to meet these standards, leaving the town with the conundrum of whether to fix one or both of these buildings or try something different altogether.

A year ago a proposal had been made for joining with Te Korowai Ngaruahine in setting up a combined facility. A business case for this was being put together, but at a previous board meeting it had been stated that this was being held up due to staff changes.

As reported in the Opunake and Coastal News (May 4), Mary Moore had spoken at the board's April 19 meeting about the toll the lack of a community facility was having on the town.

The dilemma of what to do with the Manaia District War Memorial Hall remains unresolved.

At the Oaonui meeting she said there is currently no one from Manaia on the Community Board and she was there to "remind you that we are still out there."

Board chair Andy Whitehead said the Manaia Community Facility is listed as an item for action on the board's agenda and will continue to be so.

"We acknowledge the fact that we have lost Bonita Bigham who was a tremendous advocate for Manaia. It's a great community and we accept we have no people drawn from Manaia, but we're doing our best to update ourselves."

South Taranaki District mayor Phil Nixon said the matter was still progressing, although things had "slowed a bit" due to staff changes, and they had been consulting with the community.

"It's been ongoing, and it's been going on for too long. There were a couple of times we thought we had a solution, but then we were told that wasn't what the community wanted. We are working towards something at the moment."

South Taranaki District Council group manager community services Rob Haveswood said Manaia

continued to be a priority for the Council.

"We took the elected members to Manaia to look at the facilities and we're continuing to korero with Ngaruahine," he said.

As well as discussing the lack of a community hall in Manaia the board also considered funding applications from the Pihama Hall Society and the Auroa Soldiers Memorial Hall Committee.

Trish Stevenson from the Pihama Hall Society thanked the board for an earlier grant they had made to fix a leaking roof at the Pihama Hall.

"We've had a wedding reception on a terrible night with a storm and it did not leak, so thank you very much," she said.

Trish said the Pihama Hall was enjoying some popularity hosting a number of events and were looking to "spruce it up" with new tressles and chairs.

The board voted to grant the full \$2000 being asked for, with Liz Sinclair declaring an interest and not taking part in the vote.

The Auroa Soldiers Memorial Hall Committee was applying for \$15,000 from the Waimate Plains Development Levy, a fund

for projects in the area taken up by the former Waimate Plains District Council. The money was to go towards stormwater and water tank replacement. Jill Corbett said they had a quote for \$20,000 and had received \$4296.50 in donated funds from the local community.

"I'm scared that if we don't get the work done the tank will rust and do major damage," she said.

The board voted to grant \$10,000 from the fund.

Andy Whitehead said the board needed to keep note of the continuing state of affairs in Manaia, as well as what was happening to community halls like Auroa and Pihama

"It's important for us to be aware of what's happening in our southern rohe," he said.

There were two other applications for funding from the Waimate Plains Development Levy. The board voted to grant 4663.20 to the Manaia Community Services Group for maintenance work on the Manaia Walkway, but declined to fund the Kaponga Soccer Club application to instal a water tank as they are not based within the Waimate Plains area.

London and was influenced by one of the greats Ralph Vaughan Williams. After returning to NZ he ended up as a lecturer at Victoria University.

On this month in history composer Douglas Lilburn dies

On June 6 New Zealand's foremost composer died in Wellington. He was born in Whanganui on November

2, 1915. He spent his early years at the family farm near Hunterville Drysdale which is still in the family.

From 1937 he studied at the Royal College of Music in

London and was influenced by one of the greats Ralph Vaughan Williams.

After returning to NZ he ended up as a lecturer at Victoria University.

FREE QUOTE on your new Rotary Cowshed, phone or visit today!



See us for ALL your farm building requirements: Cowsheds, maize and silage bunkers, feed lot pads, silage pits, concrete work, plus commercial joinery and houses.

Manufacturers of OCTA-LOCK anywhere in New Zealand
Maize Pits, Feedpits **BOOK NOW**
Ready for next season

FABISH & JACKSON (2010) LTD BUILDERS

3 Kelly Street, Inglewood 4330
Ph/Fax: 06 756 8099
Mobile: 0274 470 708

www.fabishjackson.co.nz | fabishjackson@xtra.co.nz



LAWYERS

OPUNAKE LAWYERS

Thomson O'Neil & Co.

Our Opunake Office is attended by:

Robert England on Wednesday & Fridays for buying and selling houses, farms & businesses; Trusts, Wills and Estates.

Mark Utting on Thursdays for buying and selling houses, farms & businesses; Trusts, Wills, Estates and refinancing matters.

FOR ALL YOUR LEGAL REQUIREMENTS

30 TASMAN ST, OPUNAKE
PH: 761 8823

67 Breakwater Rd (up Norma's Way) • NEW PLYMOUTH • PHONE 06 751 5065
FAX: 06 751 5085 • WWW.NEWTONGORDGE.CO.NZ

ALL DOMESTIC & COMMERCIAL JOINERY



• Kitchens • Stairways • Vanities • Lounge Units • Bench Tops • And More

Hipp Accounting Limited

If you find yourself spending too much time on administration/ accounting and not enough on what earns you money, it is time to call **Hipp Accounting**

Phone: 06 928 5608
Mobile: 027 610 0270
365 Ketemarae Road, Rd15, Hawera 4675

www.hippaccounting.co.nz






Talking Taranaki

TRC ready to meet challenges ahead



Protecting rivers, lakes and wetlands from pollution.

Protecting and restoring biodiversity



Biosecurity, including controlling animal and plant pests.

Taranaki Regional Council has adopted its Annual Plan for the year ahead.

The 2023/24 Annual Plan builds on our work caring for the region's environment, controlling pest animals and plants, managing three regional gardens, protecting people and property from natural hazards, providing public transport and working with communities and iwi.

The Plan prepares the Council to face the challenges ahead including changing regulations around freshwater, Resource Management Act (RMA) reform, mitigating against climate change and dealing with high inflationary pressures.

To meet these challenges, the Plan includes additional investment and spending will rise to \$53.8m (compared to \$45m for 2023/2024 in the 2021/2031 Long-Term Plan (LTP)). General rates will increase by \$1.77m (15%) for 2023/2024 – an extra \$30 per year for most residential ratepayers. The LTP had forecast a \$0.58m (5%) rise for 2023/2024. The Dividend Equalisation Reserve, grown through the Council's long-standing ownership of Port Taranaki Ltd, contributed \$1m to offset the rise in general rates.

While there are no new work programmes to those set out in the LTP, specific additions in the Plan include more staff in the science and land management areas and extra resources to develop the Natural Resources Plan.

The Council will also invest further in public transport to meet the rising demand from the community. The Annual Plan takes effect from 1 July 2023.



Providing public transport across the region.



Owning and ensuring good governance of Port Taranaki Ltd.



Caring for Pukeiti, Tūpare and Hollard Gardens.



Providing flood protection.



Ensuring the ongoing development of Yarrow Stadium.

YOUR COUNCILLORS

New Plymouth Constituency Tom Cloke: tom.cloke@trc.govt.nz - Susan Hughes: susan.hughes@trc.govt.nz - David Lean: david.lean@trc.govt.nz
 Charlotte Littlewood (Chair): charlotte.littlewood@trc.govt.nz - Craig Williamson: craig.williamson@trc.govt.nz
North Taranaki Constituency Mike Davey: mike.davey@trc.govt.nz - Donald McIntyre: donald.mcintyre@trc.govt.nz
Stratford Constituency Alan Jamieson: alan.jamieson@trc.govt.nz
South Taranaki Constituency Donna Cram: donna.cram@trc.govt.nz - Neil Walker (Deputy Chair): neil.walker@trc.govt.nz
Taranaki Māori Constituency Bonita Bigham: bonita.bigham@trc.govt.nz

☎ 0800 736 222

✉ info@trc.govt.nz

🌐 www.trc.govt.nz

📌 TaranakiRegionalCouncil



Working with people | caring for Taranaki



**Taranaki wide sales, hire and service.
Free delivery, competitive prices.**

**MOBILITY SCOOTERS
and all living aids - we'll help you
with whatever you need.**

**Kevin & Marilyn Bromell
154 PRINCES ST - HAWERA
Ph: 06 278 8072 - Freephone 0800 765 763
www.mobilityandmore.co.nz**

**SEND US YOUR SPORTS STORIES
AND PHOTOS!**



**OPUNAKE & COASTAL
NEWS**

**Promote your business or event
in our area, call us on:**

**Ph/Fax: 06 761 7016 - 23 Napier Street, Opunake
or e-mail us: ads@opunakecoastalnews.co.nz**



**Dave's available for all farm maintenance
digging and all landscaping work.**

S.O.S

Specialist Outdoor Services

call 027 605 8437

31 King Street - Opunake

New formations

The World War I letters of
Corporal Arthur J. Gilmour
of Manaia, Taranaki

By Natasha McKinney,
Poutiaki-Curator, Puke
Ariki Museum

The military camp at
Trentham is a hive of
activity when Arthur arrives
in March 1915, fresh from
working on an Otago oat
farm over the summer. The
scale of the human resource
being amassed makes an
impression, and contingents
are already departing for
war, with New Zealand's
first landings at Gallipoli just
over a month away.

Arthur takes well to the
training, judging himself to
be "fit as a fiddle and feeling
very well", as other men
fall sick and are dismissed
from camp. Again in this
extraordinary setting, Arthur
finds friends from Nelson,
Dunedin and Manaia. Others
are thinking of joining, as
the army takes on its own
social pull.

There are glimpses of how
women were responding to
the mobilisation of their
male relatives and friends.
As Arthur learns how to
load, aim and pull the trigger
on a gun, his sister Mabel is
making him a balaclava.

*6th Reinforcements
Trentham
21st March 1915*

My dear Father,

*Well, I have now been in
camp a week and the time
seems to have passed very
quickly. We have had plenty
of drill - seven hours a day -
and it is very tiring work at
first but one soon gets used
to it.*

*It is extremely interesting
and puts one in perfect
condition; I think that by
July or August we should
be thoroughly trained. We
were told yesterday that
in all first ability we would
have to put in a month or six
weeks at Aldershot in order
to be finally ready for the
front.*

*All men start on the same
footing here; we have started
right at the very beginning of*



**Corporal Arthur J.
Gilmour of Manaia,
Taranaki**

*drill - right-turn, slope arm
etc - and the officers are
doing exactly the same; they
have their rifles just the same
as the privates. Our rifles
were issued to us on Friday,
sooner than usual as we
have to be prepared to drill
the rest of the reinforcements
when they come in. We have
physical drill from 6.30 to
7.30a.m. Start drill at 9a.m
and go till mid-day and start
again at 2p.m., finishing at
5p.m.*

*We have a quarter of an
hour's spell at 10.30 & 3.30
for a smoke; meanwhile the
sergeant-majors lecture to
us. It was wet last Thursday
and in the afternoon Dr
Purdy lectured to the
Officers and non-coms of
the 6th Reinforcements on
"Camp Sanitation".*

*I have met lots I know in
Camp; they are from Nelson,
Dunedin and from Manaia.
Gordon was out at camp on
Friday evening and told me
that Leonard was very keen
on joining; I was informed
to-day that Gordon himself
was also thinking of joining.*

*The Hon. J. Allen was out
at camp yesterday inspecting
the Samoans yesterday; they
will leave probably next
week.*

*We walk about a mile and
a half on Wednesday and
on Saturday afternoons to
the Hutt River for a swim
and to do our washing; it
is a beautiful spot and we
walk through lovely bush
to get there; the water is
beautifully clear and fresh.
It is a great scene to see a
few thousand men in the*

*water at once; some doing
high dives from the bank and
others doing fancy strokes in
the water.*

*We had a piper to lead
us to our bathing parade
yesterday afternoon; the
music made a wonderful
difference to the marching.*

*The medical staff seem to
be very slack here; they turn
up their noses at most of the
men who are sick and some
are dismissed as unfit after
the doctors have refused
to treat a cold. One man
from Bill Auton's tent was
left for three weeks, he got a
pill or two for an extremely
bad cold and yesterday was
dismissed; it looked very
much as if his lung had been
affected.*

*We have a very fine lot of
men in our hut and everything
goes very smoothly.*

*We attended service
outside this morning. Out
of our fifty, four only are
Roman Catholic, the rest
being mostly Presbyterian,
Church of England.*

*Today one of our men said
grace at dinner time; the
men in our hut have decided
to say it every Sunday at
lunch.*

*It has been very wet today
and the ground around the
tents is extremely sloppy;
they need to gravel a good
deal about the paths.*

*Last night about two
thousand men went into
Wellington to spend the
evening; there was a
tremendous train which left
here at 5p.m. and arrived
back at midnight. It is an
hours run from here to
Wellington. Bill Auton and
I went in and after having
a substantial tea went to
Cederholms and spent the
evening there. They have a
kinomatograph in the house
and Mr Cederholm showed
us some beautiful pictures of
New Zealand scenery, also
specially selected parts of
Pathe's Gazette.*

*Jimmy Anderson had a
letter from Miss Aitken
saying that Mabel was
making me a Balaclava cap;
I have one but she can send
another if she likes but tell
her not to make anything
else as Mrs Kirk made me
a lot of things and the*

*Dunedin ladies gave each of
us an outfit. Altogether I have
three neck-scarfs so I won't be
short.*

*What would not be amiss
would be a nice big cake. The
food is very good but the tea is
fairly rotten. We are always
glad to go to the canteen and
get a good cup of coffee for
supper.*

*They have lovely concerts
in Camp every night in the
Y.M.C.A. and they have just
finished a fine big place, the
Salvation Army Hall. Jack
Silvester was working on it
and gets eight shillings per
day while carpentering.*

*We have a man here who
was fourteen years in the
Blackwatch Regiment. He
is very interesting and this
afternoon he told me a lot
about travelling in England
& Scotland. This evening he
told me all about the Battle
of Magersfontein in South
Africa; where he fought in the
different engagements. One
hundred and eighty men joined
the company out of eight
hundred after this battle. He
had to lie among the dead and
wounded all one hot afternoon
and at one stage when he went
to help a wounded man; he
had a perfect hail of bullets at
him for twenty minutes. These
bullets absolutely riddled the
head of the wounded man he
went to rescue and all he got
was a wounded finger and
his back merely scraped in
several places. He was badly
wounded in the leg a few days
after.*

*The heat was so great during
the day of this battle that many
of the Highlanders who had
to lay flat all day to avoid the
bullets, were unable to walk
afterwards because the backs
of their knees were absolutely
scorched by the rays of the
sun. He is a small Scotchman;
has written articles to many
papers and is extremely
interesting. One could listen
to him for hours.*

*Well I must close now as it is
late (9p.m. bed-time).*

*We get up at 5.30 and go to
bed very early; I sleep very
well with my hard canvas bag
as a pillow. Hoping to hear
from you soon.*

*I remain
Your affectionate son.
Arthur.*



50 UNION ST HAWERA
06 278 7044
info@hawerakitchens.co.nz
www.hawerakitchens.co.nz



HARDINGS
FUNERALS

The Hardings Difference.
Warm. Caring.

Here for our community, here for you
whenever you need us
Support available throughout
All Covid Levels

17 Regent Street, Hawera
(06) 278 8633
www.hardingsfunerals.co.nz

Should NPDC be saving for a rainy day?

For the New Plymouth District Council (NPDC) Cyclone Gabrielle which hammered the East Coast in February has brought back memories of Cyclone Gita which struck Taranaki in 2018.

“Severe weather is becoming more frequent and more aggressive in our rapidly changing climate and NPDC is often the first port of call when disaster takes out our roads, water supply and hits our residents,” said NPDC Councillor Anneka Carlson.

Currently NPDC injects \$300,000 to manage emergency responses, such as plans for flood protection and business continuity to keep our core services ticking over in a crisis. It also invests about \$1.3 million in the regional emergency management pot run by the Taranaki Emergency



Huatoki Plaza during recent heavy rain.

Management Office. This helps to plan for and manage emergency responses and to educate our residents on how to prepare for and recover from natural disasters, as well as training volunteers for emergency work and maintaining a network of emergency welfare centres.

“Dealing with extreme weather is a mix of ambulance at the bottom of the cliff and railings at the top and we need to manage both to be well prepared. We are asking residents as part of our draft 10-year work programme, have we got the funding mix about right or do we need to invest more in this area?” says NPDC Councillor Gordon Brown.

The NPDC Proposed District Plan aims to strengthen management

of natural hazards like flooding and coastal erosion. The Council is working on a Catchment Management Plan to explore how they can help areas with a history of flooding.

The Emissions Reduction Plan lays out how NPDC is lowering its own emissions while developing infrastructure, such as Zero Waste facilities, walkways, and cycle paths for our residents.

“Should we invest more now to future-proof our home against a rapidly changing climate, such as generators at key marae and town hubs that would shelter people in extreme weather,” says NPDC Councillor Te Waka McLeod.

More South Taranaki history goes online

South Taranaki LibraryPlus have an exciting new offering for the district’s residents, which will also benefit family history researchers worldwide, says South Taranaki District Council cultural services librarian Cath Sheard.

As part of the Government’s Covid Relief packages, the Council secured funding to digitise around 200 books from its local history collection.

“The digitised books are available from our online catalogue. This means people can find a book they are interested in, then open the PDF and search for names or places of interest to them, as the PDFs are fully searchable,” says Cath.

“Many PDF readers have a read-aloud function so people can even have the PDF read to them.”

The books in the collection cover history from around the district and include sports club centennials, church celebrations, and school jubilees.

Cath says the digitised histories are another great addition to the LibraryPlus’ online services.

“We already offer a range of eBooks, newspapers and magazines online, and now people can also do some family history research from the comfort of their own homes.”

Majestic Maunga



A great shot captured by Caleb Smith last weekend on a trip up Carrington Road.

SHOE & BOOT SALE



Winter Shoes are available!

by SCARPAS

David Deacon

Also SHOE, BAG & LEATHER REPAIRS

244 Broadway - STRATFORD

Ph (06) 765 5591 - Fax (06) 765 5594

NEED A SHED?

“We’ll See You Right”

We have extensive experience with over 3000

- * Barns
- * Implement Sheds
- * Utility Sheds
- * Stables
- * All purpose Farm Sheds

We are fast, efficient and economical. Free onsite visit to discuss all your requirements



STRATFORD

75 WARWICK RD, STRATFORD - 765 7800

Full range of precast concrete in stock

Box Culverts - bearers – pipes – troughs – inspection pipes – lids – custom made certified bridge decks



Peter Kuriger Engineering & Concrete

889 Upper Kaweora Road – Opunake 0274 526 718

Our dedicated engineering staff are keen and ready to assist

The new Firearms Registry is coming



Register your firearms and help make New Zealand safer.



Registry goes live on **24 June 2023**

New Zealand will have a firearms registry from 24 June 2023. If you're a firearms licence holder, you'll be required to provide information about your firearms or arms items from this date.

The Registry will help us make New Zealand safer. It will give licence holders more confidence when buying or selling firearms, as the Registry will let you know if you're

dealing with a current licence holder and if the firearm has been reported stolen.

The Registry is one of the ways we're strengthening how we manage firearms in New Zealand. With responsible firearms licence holders doing the right thing and filling in the Registry, it will help keep track of legally owned firearms and help prevent their transfer to those who use them for criminal purposes.

You can register your firearms or arms items on our website at any time. Just click on **MyFirearms**, the private and secure portal that houses the Registry. Otherwise our Registry and Services team will be available by phone to help during business hours.

You have 5 years until 24 June 2028 to register your firearms. However there are some circumstances where you are required to provide information for the Registry in a shorter time frame. These are referred to in the Arms Amendment Regulations as 'activating circumstances'. It's up to you to keep your information up to date. You can find information on these timeframes at: firearmssafetyauthority.govt.nz/registry



Examples of activating circumstances

Applying for or renewing a licence or endorsement	Notifying us of a change in circumstances, such as a change of address	Loss, theft or destruction of a firearm	Selling, hiring, purchasing or receiving a firearm	Importing, exporting or manufacturing a firearm or ammunition	If you're subject to any compliance or enforcement action under the Arms Act	There will be no charge for registering your firearms.
---	--	---	--	---	--	--

What needs to be registered	
Non-prohibited firearms including Specially Dangerous Airguns (PCPs)	Major parts
Restricted weapons	Prohibited firearms and magazines
Pistols	Pistol carbine conversion kits

- ### Details needed to register your firearms
- Type (rifle, shotgun etc)
 - Make
 - Model
 - Action
 - Calibre/gauge
 - If it has a non-detachable magazine (and, if so, its capacity)
 - Identifying marking (serial number)
 - A photograph of the firearm (if requested)

MAKE NEW ZEALAND SAFER. MAKE YOUR MARK.

Firearms Registry coming 24 June



firearmssafetyauthority.govt.nz 🔍



A warmer wetter May for Taranaki

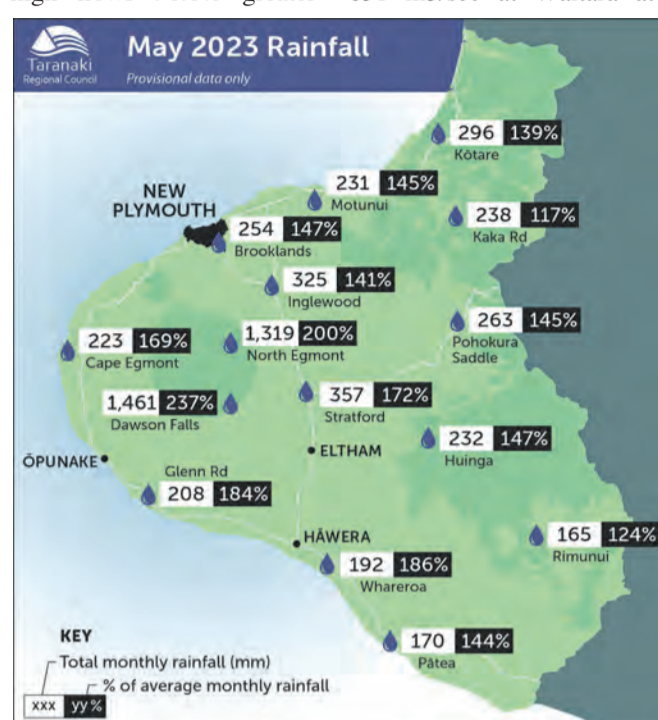
On average rainfall for May was 257.2 mm according to Taranaki Regional Council (TRC) figures.

This is 48% more than typical May rainfall, and ranging from 11% more rainfall at Omahine at Moana Trig, and 86% more rainfall at Tawhiti at Duffys than a typical May.

Year to date rainfall ranges from 11% more rainfall at Waitotara at Hawken Rd, and 78% more rainfall at Whanganui at Mataimona Trig, with an average of 36% more than normal. Compared to typical full year totals, on average sites have already received 48% of a typical year's rainfall, with the highest value at Hawera AWS, 57% of normal, whereas Uruti at Kaka Rd sits at 40% of the typical years total.

Mean river flows for May

were 94.6% greater than typical values, low flows were 191.4% greater, and high flows 96.6% greater than typical values. The maximum river flow recorded in May was 651 m3/sec at Waitara at



Bertrand Rd.

Mean river (non-mountain) water temperatures were 13.3 °C, an average of 1.3 °C warmer than long-term May values. Nighttime-low water temperatures were on average 1.9 °C warmer than historic lows, and daytime high temperatures were on average 1.1 °C warmer than historic highs. The maximum river water temperature recorded in May was 18.6 °C at Kapoiaiaia at Lighthouse.

The average air temperature for the region (excluding Te Maunga sites) was 13.3 °C, which is 1.2 °C warmer than long-term May averages. Low air temperatures for May were on average 0.9 °C warmer than the May average for previous years.

Day-time high temperatures were on average 0.8 °C warmer than historic highs. The maximum air temperature recorded in May was 22.7 °C at Kapoiaiaia at Lighthouse.

The average soil moisture for May across sites in Taranaki Region was 34.5%. Soil moistures were on average 3.3% wetter than typical May values. On average, low soil moistures were 8.3% wetter than previous lows, and the highs were on average 0.1% drier than previous values for May.

May soil temperatures were generally 1 °C warmer than long-term averages. Average nighttime low soil temperatures were 1.9 °C warmer than recorded

lows, and upper day-time soil temperatures were on average 1.2 °C warmer than long-term May highs. The maximum soil temperature recorded in May was 18.9 °C at Kapoiaiaia at Lighthouse.

May average wind speeds were 16.6 km/hr, with average gust strength of 46.8 km/hr, these were 0.6 km/hr stronger, and 2.4 km/hr gustier than the long-term average. Average calm weather wind speeds were 0.9 km/hr stronger than recorded lows, and windy conditions were on average 0.3 km/hr lighter than long-term May highs. The maximum wind gust recorded in May was 118 km/hr at Uruti at Kaka Rd.

Significant offshore wind project milestone

Taranaki Partnership marks significant offshore wind project milestone

Offshore marks significant offshore wind project milestone

Taranaki Partnership, a joint venture between Copenhagen Infrastructure Partners and NZ Super Fund, is set to deploy the first piece of physical offshore wind technology in New Zealand, a Floating Light Detecting and Ranging device (FLiDAR).

To be stationed 37km off the coast of Patea in the South Taranaki Bight for one year, the FLiDAR will measure wind speeds at heights of up to 300m, waves and currents to provide data critical for assessing the feasibility of the proposed offshore wind farm.

Taranaki Offshore Partnership's Giacomo Caleffi says this is a key part of its feasibility investigations, bringing potential offshore wind development, and its benefits, another step closer for New Zealand.

"Offshore wind is one of the fastest-growing renewable energy technologies globally, as it enables renewable energy generation at scale and complements other forms of renewable

Continued page 22.



The Floating Light Detecting and Ranging (FLiDAR) device will measure wind, waves and currents and will be stationed in the South Taranaki Bight for one year.

AUTOMATED TEAT SPRAY MIXER



SOOOO MUCH BETTER!

Wonder Distributors

165 Bridge Street, Eltham
Phone 0800 100 350

P.G. O'RORKE CONTRACTING

Undersowing and Roller Drilling



Ph 027 451 4425

Five contingency measures to winter-proof your farm

As we approach the winter months it's important to be prepared for the challenges and uncertainties that come with unpredictable weather events. Winter can be challenging enough as it is, so having some contingency measures in place can help take some of the stress off. Here are some contingency measures you can take to protect your farm:

1. Ensure council and dairy company compliance:

Make sure you're compliant with both your local council and dairy company (this will likely be a condition of supply). The last thing you need over winter is to be pressured to make changes, or worse, slapped with a fine. If you're unsure or just want expert advice on the best plan of action so you can do it once and do it right, talk to an accredited effluent management system designer. They'll be able to tailor a plan for your situation.



Tractor driven PTO pond stirrers can be taken to multiple storage areas

2. Ensure the functionality of your storm water diverter:

Now is a good time to make sure your storm water diverter is functioning correctly or get one installed if needed.

3. Prepare storage

and effluent management equipment:

If you need more storage, or want back-up storage, consider purchasing a bladder tank. These can be both cost-effective and easy to install, requiring minimal earthworks. Being closed storage you also won't be worried about it filling up with rain.

It is important to empty

your ponds and storage in preparation for spring. This is a good opportunity to review your effluent equipment in terms of efficiency, effectiveness and functionality and repair/replace anything that is not up to scratch.

Portable effluent management equipment that doesn't require electricity to operate can be a huge

benefit. Tractor driven PTO pond stirrers can be taken to multiple storage areas and are also great to ensure the pond is thoroughly mixed before emptying with minimal sludge or solids left behind. PTO pumps are great for pumping thicker slurries and from various places.

As for spreading, both drag hose systems and slurry tankers give the ability to spread anywhere over the farm. Drag hose systems are an efficient option for farms with large storage wanting to empty ponds fast, and all in one go. Slurry tankers are a great all-round solution. They allow for easy spreading when you want to, while also being great for handling thicker slurry, and cleaning out ponds, troughs, under-barn storage and weeping walls without the mess of a digger.

4. Invest in a flood pump:

If you live in an area prone to flooding, consider purchasing a flood pump as a 'no-brainer' insurance policy. The key to saving crops and pasture from

drowning is time, so pumping the water off fast is critical. It will also save the stress and hassle of having to re-grow and buy in additional feed. Sharing a pump with your neighbours could be a good option if appropriate.

If you do have or get a flood pump, find a good place to park it so that in the event of a flood you can act fast to deploy it. The faster you can act, the less impact the water will have on your crops and revenue.

5. Be prepared for power outages:

With unpredictable weather patterns, it's important to be prepared for power outages. Consider purchasing backup generators or alternative sources of energy to ensure your farm can continue to operate during outages.

By taking these steps now, you can have peace of mind knowing your farm is as protected as you can make it against the challenges and uncertainties of the winter months.

Nevada

NZ FARMERS LIVESTOCK

For all your
Livestock requirements
Servicing the Coast

Contact

Bryan Goodin - 027 531 8511
Sheldon Keech - 027 222 7920

Significant offshore wind project milestone

Continued from page 21.

energy, for example

generating electricity when other technologies might not," says Mr. Caleffi.

New Zealand has over 80% renewable electricity already, but across the economy – including transport and industrial heat – the proportion of all energy that is renewable is around 40%. To meet emissions reduction targets will require greater electrification and significant new sources of renewable energy.

Taranaki Offshore Partnership's proposed offshore wind farm would produce up to 1GW of electricity, comparable to some of the largest hydroelectric power plants in the country, capable of meeting over 11 per cent of New Zealand's current electricity demand.

"We're excited to be part of New Zealand's transition

to producing more home-grown clean energy to support decarbonisation of the economy, leveraging our proven experience of developing and operating offshore wind farms around the world," says Mr. Caleffi.

Copenhagen Infrastructure Partners and its development arm, Copenhagen Offshore Partners, has a portfolio of 12 operational, under construction and in-development offshore wind projects in North America, Europe, Asia and Australia, cumulatively representing total capacity of ~30 GW.

"As well as delivering renewable energy at scale, the development of an offshore wind industry in Taranaki will also create new opportunities for skilled workers smoothing the region's transition away from emissions intensive

industries," says Mr. Caleffi.

The international FLiDAR specialists currently in New Zealand to deploy the device are training a local crew in Taranaki to operate and maintain that equipment for the year. Construction and operation of the offshore wind farm, subject to feasibility assessments and regulatory settings, would create many more jobs locally.

"There's still a long way to go in our feasibility investigations, including a number of environmental impact studies and extensive iwi and community engagement, but deploying the FLiDAR reflects the momentum building around this project and the creation of an offshore wind industry in New Zealand," says Mr. Caleffi.

HIRE THE LORD OF THE TREE RINGS



TARANAKI'S LARGEST MOBILE LOG SPLITTER!

Splits more than 50 cu/m in 8 hours just about anywhere on your farm.

Lifts and splits massive rounds straight onto your trailer.

\$200 per hour + GST including operator.

FOR MORE INFO, CALL JOE GOODIN
TEL: 027 688 5372

NZ's Leading Dairy Effluent Management Specialists



nevadagroup.co.nz | 0800 464 393

Mayor fronts up on Manaia sewage

Bubbling sewage has long irked residents of Kauae Street in Manaia. On June 1 South Taranaki mayor Phil Nixon dropped by to have a look for himself and talk to those most affected.

As reported in the Opunake and Coastal News (March 23) Bruce Salisbury told the March 8 meeting of the Taranaki Coastal Community Board that the effects of a sewage overflow linked to the February 6 2022 weather event were still causing problems for him and other Kauae Street residents. During this event a manhole cover across the road from where he lives had blown, spewing up bubbling sewage which had flowed into a nearby paddock. On the other side of the road a river of raw sewage had flowed down the footpath past Bruce's place into a nearby stream.

Bruce, who is a former design engineer for the Tauranga City Council ago says sewage issues like these have been an ongoing problem since he shifted to Manaia eight years ago. The manhole cover would blow three or four times a year, and following the weather event of February last year the spill had left a metre and a half deep lake of sewage which stayed around for the next two months. The nearby roadside berms were so sodden that contractors were not able to mow them. "We don't want to go another year with a paddock full of shit," says Bruce.

He says neighbours who have been here longer have said the issue goes back



Bruce Salisbury makes a point to South Taranaki District mayor Phil Nixon.

further still. One neighbour had told the Council about it 20 years ago, he said.

It has taken a toll on property values, with Bruce saying sewage problems have knocked \$80,000 off the value of his own

property.

Bruce blames the sewage problems on an infrastructure which he says is outdated and not fit for purpose. He says the manhole is serviced by a 90 year-old six -inch pipe carrying

sewage from Kapuni and Riemenschneider Streets, and possibly the other side of town, and it then goes to a 250 diameter pipe at the Sutherland Road-Kauae Road intersection, and from there to the oxidation pump.



South Taranaki District mayor Phil Nixon looks into the offending manhole.

He says the number of connections is based on the number of houses and not the number of people living in those houses.

A former Petone and Wellington rugby player he sees a problem coming up with the Taranaki versus Wellington rugby match in July.

"We've got 5000 people coming into town on July 29," he said.

Mayor Nixon said something needed to be done.

"This has gone on for far too long,"

He said the Council is

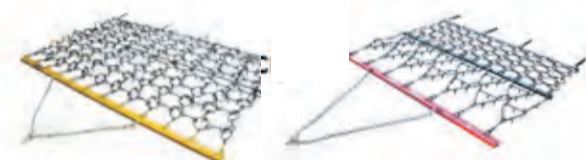
working with residents, plumbers and contractors to find a solution to the problem.

On the day he turned up contractors were at work trying to assess wastewater issues. Mayor Nixon said they were using CCTV cameras to detect damage and carrying out smoke testing.

Bruce said he gave the mayor credit for coming and seeing him.

"Phil's come out here, and we need leaders who are prepared to listen to the people.," he said.

HARROWS & ROLLERS NOW IN STOCK



NEW PLYMOUTH

HAWERA

06 758 2274

06 278 5119

PAUL 027 498 7277 RAYMOND 027 444 8861



We have a new Tow and Fert based from our Auroa Depot.

Need grass in a hurry? Consider this!

Specialising in Nitrogen and Gibberellic Acid mixes.

- Cost-effective option to help speed up grass growth with a quicker response.
- Great value for money.
- Use half the Urea content to also help keep your N Cap down.
- Can spread any soluble fertiliser.

Give the team a call to book it in, 0800 707 404 - option 2



UNIFIED AND AMPLIFIED FORCE - COASTAL RUGBY 2023



SETTLERS HONEY LIMITED

459 HEADS ROAD, CASTLECLIFF,
WHANGANUI
PH 06 929 5763



Supporting Taranaki farmers and proud to be in the scrum with Coastal Rugby!



Grant Gibson 027 528 8511
admnewzealand.co.nz



Peter Moffitt Consulting Ltd
DAIRY FARM CONSULTANT

Phone: 06 751 1265
Mobile: 027 242 1812

SANDFORDS
RURAL CARRIERS

Proud to support Coastal Rugby

COASTAL AGRI SERVICES
Our Promise... "PEACE OF MIND"

97 TASMAN ST, OPUNAKE | PH 06 761 7079

CRAIGS
INVESTMENT PARTNERS

1st Floor, 9 Young St, NP
newplymouth@craigsip.com **06 759 0015**

ECOLAB

Proud sponsors of Coastal Rugby
CHRIS STANDING - 021 791 246

SINCLAIR
ELECTRICAL &
REFRIGERATION

sinclairelect@xtra.co.nz

Opunake 761 8084 Okato 752 4084
Kaponga 764 6084 Manaia 274 8084

BRIAN HILL
BD HILL BUILDING
0274 442 703

Max Pennington's
AutoCity

86 Molesworth Street, New Plymouth, Ph 06 769 5371
39 Regent Street, Hawera, Ph 06 278 2010 (0800 3 AUTOCITY)

Proud to sponsor
Coastal Rugby

SPREADING
FBT
QUALITY DRIVEN

Proudly supporting the coast for
over 56 Years.

Sponsors of
COASTAL DIVISION 1



Call Spreading FBT on
0800 432 866 | fbt.co.nz

QUALITY AGRICULTURE ON TIME

phone: 06 76 38765
www.goodinag.co.nz

Proud Sponsors of
- The Coastal Rugby Club Farm



GoodinAg

Coastal Premiers v Tukapa

The day dawned fairly fine. Anticipation was high for a good performance due to a crucial encounter for the top four.

Opunake was the venue, a late minute change-around due to the field being damaged in wet weather at Rahotu.

A large crowd gathered for what was the first game of club rugby in Opunake since 2015.

Josh Lord was back in the starting line-up after a break with concussion playing for the Chiefs in New Plymouth.

The field was in great shape and everything was set for a good game.

Coastal started very well

and got out to an early 7-0 lead after a cracking try to big use Chris Gawler. After many well worked phases Logan Crowley fed Chris with a beautiful inside ball and from 20 metres out galloped in beside the posts to give us a ascendancy

Tukapa scored a long-range effort after one of our very few defensive efforts of the day to their fullback who was a handful all day to level scores.

What was to follow was the winning of the game. Tukapa threw phase after phase at us but Coastal to a man stood firm bowling them back in the tackle and counter-rucking and from a

crucial turnover by blindside flanker Blake Barrett the ball got through the chain, Josh Lord who made a good run freeing his arms and putting hooker Ropata Taylor away down the right flank 75 metres out after many to and fro, regathered for the third time in the movement and dash 30 metres to finish a spectacular try.

Then in the 25th minute Beau Pari scored off multiple side to side phases before being put in a hole to make the halftime score 21-7.

We had to hold on till halftime under extreme pressure from Tukapa who were throwing everything at our defence line, but we remained solid.

After the break we carried on like the first half tackling hard out, but a second try to Tukapa made the crowd a little nervous. Jeremy Newell crashed over to make it 28-14 after being converted by Jackson Sinclair, making it four from four before being replaced after a slight knock.

A penalty to Rick McKenna took us to 31, but Tukapa scored late in the game to make it 31-19.

All Coastal players needed congratulating for an awesome effort topping off a good day and both teams entered into the spirit of the game, and special mention must go to Will Johnson who controlled play excellently to make the game the spectacle it was.

There were a few sore bodies at the end and hopefully all players who left the field injured will make a speedy recovery, most wearing blue and white. At one stage there were four

guys down needing attention in one movement.

For the Coast players of the day points were hard to work out but one point to Daniel Crowley, two points to Ropata Taylor and three to our Player of the Day Logan Crowley who showed the class player he is on attack and also making some crucial cover tackles when our defence was tested.

Special mention must go to Blake Barrett and Pari and Newell in the loose. They were working well in unison. Also Josh lord and Luka Cassidy who dominated the lineouts and kick-offs and had some big runs. In the backline Kobe Sinclair at 15 was everywhere and his defence organisation of the backs was very pleasing to see from a young guy playing his first start at 15.

Congratulations to Harley Seymour-Loveridge who had his first start in the premiers. He is a big body and was loving his defence, and hopefully in the coming weeks we can get the ball in his hands more.

All bench players came on and added plenty.

It was great to play at Opunake again. There was a great crowd in attendance and the facilities are second to none in Taranaki.

Also thanks to our MVP of last season Shamus Hurley-Langton who ran water for us. He is back from Ireland where he is playing professionally and carving up. It was great to catch up and no doubt we should see more of him in the coming weeks.

Ride the wave



Victoria McCullough celebrates her blazer game with Coastal Women.

Simpsons Tyres and Service Centre

22 Leach Street - New Plymouth
Ph: 06 758 0780 29



PICKERING MOTORS

PH: 06 761 8363 - Tennyson St - Opunake
GO COASTAL!



UNIFIED AND AMPLIFIED FORCE - COASTAL RUGBY 2023



Max Pennington's
AutoCity
86 Molesworth Street, New Plymouth, Ph 06 769 5371
39 Regent Street, Hawera, Ph 06 278 2010 (0800 3 AUTOCITY)

**Proud to sponsor
Coastal Rugby**

**Corkill
SYSTEMS LTD**

Proud sponsors of Coastal Rugby

5 Tasman Street Opunake, Taranaki
PHONE 06 761 7531 - 0800 107006

be the
FRONTRUNNER
NEW PLYMOUTH

**PROUD TO BE SUPPORTING
COASTAL RUGBY WOMEN**

Coastal Vets
Coastal
Veterinary Services
Ph 06 761 8105

**Coastal Meat
PROCESSORS**
www.coastalmeats.co.nz
Phone: 06 752 4280
027 752 4280

John & Jacinta Hurley
NEW PLYMOUTH | INGLEWOOD
STRATFORD | HAWERA

**CAMPBELL
CONTRACTING LTD**
Rusty: 027 280 0743

**Newton
Gordge
JOINERY**
67 Breakwater Rd,
Motorua
Phone 06 751 5065
NEWTON GORDGE
JOINERY

**HCL
Builders**
Heartland Construction Ltd
Contact Phill
027 236 7129

PIONEER®
BRAND · PRODUCTS
South Taranaki Pioneer
Area Manager:
Kim Sharpe 027 528 0012
North Taranaki Pioneer
Area Manager:
Alan Bunning 027 206 0147

Carrfields
Tim Hurley 027 414 6756
Daniel Crowley 027 215 3609

TAB BAR
**Nag
Noggin**
57 TUKAPA ST,
NEW PLYMOUTH
06 753 7929
SUPPORTING
COASTAL RUGBY

**JFM
CONTRACTING**
Jared McBride
06 752 4558 or
027 4775 701
GO COASTAL!

Coastal Premiers v Stratford-Eltham

The weather was fine for running rugby and my word did Stratford-Eltham run. Stratford dominated all areas of the game running in many tries from long range. A real disappointing effort from Coastal and a lot of soul searching should be done. The halftime score was 24-

14 down, flattering really as we didn't bring much to the table. In the second half Stratty ran in many tries from long range to run out winners 78-21. The only positives for Coastal were two tries to Jeremy Newell and one to Ben Brophy, all converted

by Jackson Sinclair. The Coastal defence was passive and non-existent at times. Player of the Day points. 3 Beni Kalin who toiled hard all day and 2 to Rick Mckenna who brought some steel when coming on in the second half and 1 to Scott Quinnell who also added

plenty when coming on. We have our backs against the walls now and have to win our remaining three games to make the top four. Playing Spotswood next week at Yarrow Stadium. Looking for a major improvement.



The home games held at Opunake drew a large crowd.



**Advertise your event in the
Opunake & Coastal News**

Call our sales team on
06 761 7016

BTW COMPANY
SURVEYING | ENGINEERING | PLANNING & ENVIRONMENT
179 Courtney Street, NP | 0800 BTW Survey (0800 289 787)

**COASTAL
Printers**
COPY · PRINT · DESIGN
Phone: 06 761 8037 Email: cavco@xtra.co.nz

SPINA PHOTOGRAPHY



UNIFIED AND AMPLIFIED FORCE - COASTAL RUGBY 2023



BRUCE THOMPSON
 FREEPHONE 0800 654 779
 MOBILE 027 4455 258



**Proud to sponsor
 Coastal Rugby**



**Proud to be supporting
 COASTAL RUGBY**



06 759 9034



ACCOUNTING AND TAX

Call us on 06 281 1565 or 027 4542 284
 62B Carthew St, Okato

0800 100 123



**Smarter farming for
 a better New Zealand**

CHALLENGE Raho
 5800 South Rd, Raho
 Ph 06 763 8848



027 558 9004



Kelvin Weir: 027 248 1798

NZ FARMERS LIVESTOCK

For all your Livestock requirements

Bryan Goodin - 027 531 8511
Sheldon Keech - 027 222 7920



Coastal Division 1

On June 3 Coastal played Tukapa. After too long this game was a great opportunity to be playing back on Opunake soil and the boys were definitely pumped for it. Playing into the wind in the first half the boys took a while to get going. After 20 minutes Scott Quinnell got a cracker run away try which was converted by Scott Anderson. It wasn't long before the boys started putting some great phases together and started offloading the ball well. At half time the score was 14 - 0. In the second half the boys got the momentum going and the tries started coming. There was some good continuity to our play and some hard running and even harder hits on defence. Veteran Gareth Goodin, the sneaky little half back, managed to secure three tries for the day along with Liam Parker, Michael Julian and Nathaniel Vincent all

managing to cross the line. At full time the score was 43 - 7. A fine performance from the lads.

On June 10 Coastal played Stratford.

The boys turned up to Stratford with one thing on their mind...if we want to be top four this is a must win game. The boys took the field and were up for it from the kick off. Coastal started with a hiss and a roar. You could feel and hear the hard hits that were going both ways on the field from the side lines. After nine minutes of battling the boys got behind Dean Stuthridge and pushed him over for a try. This lifted the boys to another level and it wasn't long before birthday boy Ben Bermeister touched down another well-deserved team try which was converted nicely by Scott Anderson. The boys kicked off and Stratford went straight through us and over the line in the 16th minute



Shane Stevenson powers up field.



Scott Quinnell in action against Tukapa.

to make the score 12 - 7. Both teams battled it out with intensity for the rest of the half with no change to the score.

In the second half the boys were back in full swing with some good straight ball running by all the forwards and nice control by the backs. It wasn't long before the boys managed to break through the Stratford defence and Gareth Goodin was over for the only try of the second half which made the final score 19 - 7. Got to give credit when credit is due and congratulate the boys on their win. It was a cracking game played with huge intensity from both teams and there would be some boys still feeling it on Monday. A deserved must win under pressure and the momentum is building nicely for the business end of the season.

Greg O'Byrne 027 598 3000
Property Brokers



YOUR BROADBAND SPECIALISTS

GO LOCAL - SWITCH NOW

0800 123 774 | www.primo.nz

HAPPENING HOLIDAYS

Puanga



Week One

Week Two

RĀHINA 3 HŌNGONGOI | MONDAY 3 JULY

Dreamcatcher Making - Art with Kerryn*, Pātea Old Folks Hall @ 10am - 12noon. For ages 6 - 15. \$15 per person. Book at your local LibraryPlus or the South Taranaki i-site Visitor Information Centre.

Salt Paintings - Art with Kerryn*, Hāwera Community Centre Hall @ 2pm - 4pm. For ages 6 - 15. \$15 per person. Book at your local LibraryPlus or the South Taranaki i-site Visitor Information Centre.

Movie Magic - Elemental (PG)*, Hāwera Cinemas, afternoon session. Suitable for 8 years +. \$11.50 per person. Book at the South Taranaki i-site Visitor Information Centre.

RĀTU 4 HŌNGONGOI | TUESDAY 4 JULY

Roller Skating, TSB Hub @ 10am - 12noon, \$5, cash entry.

Creating a woven star - Hāwera LibraryPlus @ 10.30am. All ages. Have fun creating stars for the night sky using wool and paper. No booking required.

Movie Magic - Cats in the Museum (G)*, Hāwera Cinemas, afternoon session. \$11.50 per person. Book at the South Taranaki i-site Visitor Information Centre.

Puanga Dream Mobiles Hāwera LibraryPlus @ 2pm for all ages. An interactive Storytime with the book 'The promise of Puanga' following by Star art weaving.

RĀAPA 5 HŌNGONGOI | WEDNESDAY 5 JULY

Big Day Out*

Depart TSB Hub @ 9am - 4pm. 10+ years, \$20 entry. What to bring: Togs, towel, change of clothes, money for lunch. Get on the bus for a trip to New Plymouth. Hydrolides and a swim at the pools, Burger King for lunch and finish the day at Bowlarama.

Puanga Dream Mobiles Ōpunakē LibraryPlus @ 10am for all ages. An interactive Storytime with the book 'The promise of Puanga' following by Star art weaving.

Hāwera Aquatic Centre Games - Under 8s Hāwera Aquatic Centre @ 11am - 12.30pm. Normal entry fee applies. Come along for a morning of races, games and a treasure hunt. Call 278 0021 or email aquatic@stdc.govt.nz to book in.

Te iwa o Matariki | The 9 Stars of Matariki Pātea LibraryPlus @ 10.30am | Waverley LibraryPlus @ 2pm. An interactive session that will explore the two water stars, play some games and do some fun fishy craft. For all ages, no need to book.

Fairy Light Lanterns - Art with Kerryn*, Ōpunakē Town Hall @ 10am - 12noon. For ages 6 - 15. \$15 per person. Book at your local LibraryPlus or the South Taranaki i-site Visitor Information Centre.

Ferdie Skills Sessions - Taranaki Rugby. Hicks Park, Hāwera. Have a go at skills and games. No need to book. Primary School Years 1 - 6 @ 10am - 12noon | School Years 7 - 10 @ 1pm - 3pm.

RĀPARE 6 HŌNGONGOI | THURSDAY 6 JULY

Roller Skating - TSB Hub, 10am - 12noon. \$5, cash entry

Movie Magic - The Flash (M)*. Hāwera Cinemas, morning session. \$11.50 - book and pay at South Taranaki i-site Visitors Centre.

Driftwood Taonga Mobiles Eltham LibraryPus @ 10.30am, Kaponga LibraryPlus @ 2pm. Make a mobile design and decorate your own stars.

Remembering important people Hāwera LibraryPlus @ 10.30am. Remember your favourite people, create messages for them and add them to the tree. No booking required, just turn up.

RĀMERE 7 HŌNGONGOI | FRIDAY 7 JULY

Salt Paintings - Art with Kerryn* Ōpunakē Town Hall @ 10am - 12noon. For ages 6 - 15. \$15 per person. Book at your local LibraryPlus or the South Taranaki i-site Visitor Information Centre.

Movie Magic - Elemental (PG)*, Hāwera Cinemas, morning session. Suitable for 8 years +. \$11.50 per person. Book at the South Taranaki i-site Visitor Information Centre.

Grow your own seeds - Sustainable Taranaki* St Mary's Community Garden @ 1 - 2pm. \$5pp for 8 - 12 year olds. Learn about growing your own kai from seeds. Kids will make take home planters they decorate in the session. Supported by Taranaki Seed Savers. Book at i-site or your local LibraryPlus.

RĀHINA 10 HŌNGONGOI | MONDAY 10 JULY

Stone Collage - Art with Kerryn*, Ōpunakē Town Hall, 10am - 12noon. For ages 6 - 15. \$15 per person. Book at your local LibraryPlus or the South Taranaki i-site Visitor Information Centre.

Movie Magic - Cats in the Museum (G)*, Hāwera Cinemas, afternoon session. \$11.50 per person. Book at the South Taranaki i-site Visitor Information Centre.

RĀTU 11 HŌNGONGOI | TUESDAY 11 JULY

Puanga fun with Michaela - Hāwera LibraryPlus @ 10.30am. No booking required.

Fairy Light Lanterns - Art with Kerryn*. Pātea Old Folks Hall, 10am - 12noon. For ages 6 - 15. \$15 per person. Book at your local LibraryPlus or the South Taranaki i-site Visitor Information Centre.

Art with Natural Taonga - Manaia LibraryPlus @ 2pm. Create art with natural taonga/treasures that expresses what you're thankful for.

Stone Collage - Art with Kerryn*, Hāwera Community Centre Hall, 2pm - 4pm. For ages 6 - 15. \$15 per person. Book at your local LibraryPlus or the South Taranaki i-site.

Movie Magic - The Flash (M)*. Hāwera Cinemas, afternoon session. \$11.50 - book and pay at South Taranaki i-SITE

RĀAPA 12 HŌNGONGOI | WEDNESDAY 12 JULY

Rippa Rugby Tournament - Taranaki Rugby. Hicks Park, Hāwera, 10am - 2pm. \$30 per team (teams of up to 10). Years 5&6, Years 7&8. Register at www.trfu.co.nz

Art with Natural Taonga - Ōpunakē LibraryPlus @ 10am. Create art with natural taonga/treasures that expresses what you're thankful for.

Hip Hop Dance Classes. TSB Hub, Hāwera @ 10.30am - 11.30am. 5 - 12 year olds. No need to book.

Puanga fun with Michaela - Eltham LibraryPlus @ 10.30am | Kaponga LibraryPlus @ 2pm. No need to book.

The Promise of Puanga - Patea LibraryPlus @ 10.30am | Waverley LibraryPlus @ 2pm. An interactive Storytime of the book 'The Promise of Puanga' followed by star art weaving. No need to book.

Hāwera Aquatic Centre Games - Over 8s Hāwera Aquatic Centre @ 11am - 12.30pm. Normal entry fee applies. Come along for a morning of races, games and a treasure hunt. Call 278 0021 or email aquatic@stdc.govt.nz to book in

RĀPARE 13 HŌNGONGOI | THURSDAY 13 JULY

Roller Skating - TSB Hub @ 10am - 12noon. \$5, cash entry.

Dreamcatcher Making - Art with Kerryn*, Ōpunakē Town Hall @ 10am - 12noon.

Building a photo frame for loved ones, Hāwera LibraryPlus @ 10.30am. Have your photo taken in the library and create a photo frame to celebrate Puanga.

Rippa Rugby Tournament - Taranaki Rugby*. Hicks Park, Hāwera @ 10am - 2pm. \$30 per team (teams of up to 10). Years 5&6, Years 7&8. Register at www.trfu.co.nz

Movie Magic - Coco Reo Maori (PG)*, Hāwera Cinemas, afternoon session. Suitable for 8 years +. \$11.50 per person. Book at the South Taranaki i-site Visitor Information Centre.

RĀMERE 14 HŌNGONGOI | FRIDAY 14 JULY

**** MATARIKI PUBLIC HOLIDAY ****

Movie Magic - Elemental (PG)*, Hāwera Cinemas, afternoon session. Suitable for 8 years +. \$11.50 per person. Book at the South Taranaki i-site Visitor Information Centre.

*Activities marked with an asterisk need to be booked and paid for more than 24 hours in advance at the South Taranaki i-site Visitor Centre. Movie Magic and Big Day Out also require permission slips to be filled out. Numbers are limited, so be sure to book early.

Val Deakin Dance Theatre

Val Deakin has dedicated her life to teaching dance and creating dances for a wide range of people – of all ages and all abilities.

She began her dance training in New Plymouth and moved on to study in Wellington before heading to London to further her dance training. She was selected by Dame Ninette de Valois, the then director of the Royal Ballet, to attend the Royal Ballet School on scholarship and then sent to Ankara, Turkey to teach in the State Conservatoire there, under the auspices of the British Council. She taught as well as danced and choreographed with the newly formed Turkish Ballet, and continued her dance and teaching studies there with Molly Lake and Travis Kemp.

She was invited by Dame Ninette de Valois to return to London where she joined the Opera Ballet at Covent Garden. In London she

danced with the Opera Ballet, the Royal Ballet, taught classes and choreographed dances for several operas at Covent Garden.

After leaving Covent Garden she worked as a teacher and choreographer with large scale pantomimes and small companies in England, and furthered her contemporary dance studies with the Martha Graham School in London.

Val was invited to New York to join the Manhattan Festival Ballet as a dancer, ballet mistress and choreographer.

She was invited by Frederick Franklin to join the teaching staff at the National Ballet School in Washington, D.C, later becoming head teacher, choreographed a work for the National Ballet Company and taught company classes.

Val formed her own small dance company that performed with the California Ballet, in



Val Deakin (seated) and Jane Roseman.

Photo Roger Richardson, Live Magazine.

overseas to return to perform with the Dance Theatre – including Marc Stevens, Nigel Gallienne and Christopher Lyall.

Val was awarded a Suffrage Centennial medal in 1993.

She is also the recipient of the New Plymouth Soroptomist's Women of Spirit Award in 2008.

Val choreographed up until 2022 and continues to oversee classes for children, teens and adults – finding a way to let each person experience dance in their own unique fashion.

On this month in history Brezhnev becomes president of the USSR

Leonid Iliyich Brezhnev was born in Kamianske, Ukraine. His occupation before politics was as an engineer and he was Director of a technical school in Ukraine. In his army service he attained the rank of Major General.

On June 16, 1977 Leonid Brezhnev became president of the USSR. More exactly he became Chairman of the Presidium of Supreme Soviet until his death in 1982. (He also held this position from 1977 to 1982). He was General Secretary of the Communist Party 1964-

A Colourful Extravaganza from The Opunake Players

The Opunake Players present a commemorative celebration of our life members with an evening.

“A Colourful Extravaganza”

To be held at The Sinclair Electrical and Refrigeration Event Centre on the 1st of July

from 7pm till 11pm.

It will be a combined evening of music and drama from a large talented cast.

We would like to encourage everyone to come along and

share this fun evening of celebration with us.

Dress up in colourful attire and bring your dancing shoes.

Tickets are \$50. per person which can be purchased at Sinclair Electrical, Opunake.

This is for one night only! Tickets are limited.

Table platters provided by Soul Kitchen will be included in your ticket price, there will also be a licenced bar available for you to purchase drinks.

upstate New York and in Providence, Rhode Island. She also choreographed for the Richmond Ballet, Elmira/Corning Ballet and the Scranton Ballet, and taught master classes in several schools and universities.

In 1972 Val returned to New Zealand and the next year founded a dance school teaching ballet, jazz, tap, modern (contemporary), character dance and mime. She continues to teach in the school.

At the same time, she formed the Val Deakin Dance Theatre Trust, a performing group open to students from all schools of dance (and even those not attending any school of dance) to give public performances of a wide range of dance works.

For 15 years, Val directed several programmes of dance education taken into primary, intermediate and secondary schools throughout the North Island and parts of the South Island. Val directed several week-long dance/drama workshops for intermediate age school children. She

continued to direct dance/drama workshops for children, teens and young adults. She has taught many workshops in movement for actors, choreography, mime, theatre lighting and theatre make up.

She has received several choreographic awards from the Queen Elizabeth II Arts Council for her works.

The Dance Theatre has also encouraged New Zealand performers working



Steps in Time. Photo Channa Miriam Knuckey

Le temps des collages

An exciting opportunity. Philippe Lemaire is a very well-known collage artist, not just in France.

He is now offering his collages for exchange rather than for sale, more interested in building his own collection of other artists' work.

This is an exciting opportunity. 12 collages, representing each month of the calendar, offered to the first person who replies with the offer of a collage of their own.

Philippe is kind enough to describe this exhibition



On jouerait à voler comme des anges. (ary) We wish to play and fly with the angels.

as a continuation of the International Collage Exchanges which I ran for 20 years. He likes the philosophy of artists' sharing of their work, rather than trusting it to a commercial market-place.

Philippe Lemaire's exhibition, the collages offered for exchange, is on the Virtual Tart Website at www.tart.co.nz

Have a look, and good luck with being first to reply.

Cheers Dale Copeland

Opunake Players Inc Present
A COLOURFUL EXTRAVAGANZA!
 of Music & Drama
SATURDAY 1ST JULY
 7pm till 11pm
 At: Sinclair Event Centre Opunake

Licensed Bar
 Table platters provided by... Soul Kitchen
 Bring your dancing shoes!



STATE OF NATURE
 7 APRIL - 5 NOVEMBER 2023
 PUKE ARIKI MUSEUM
 Puke Ariki NPDC



The New Zealand Doctors Orchestra who will be performing in New Plymouth .

New Zealand Doctors orchestra returning to NP

The New Zealand Doctors' Orchestra will be returning to New Plymouth, performing on Sunday 23 July 2.00pm, at the Theatre Royal, TSB Showplace.

All proceeds from the ticket sales will be going to Hospice Taranaki – a very worthwhile cause.

The orchestra has over 70 players and is made

up of doctors and medical students from around New Zealand, including one New Plymouth doctor and three medical students who are from New Plymouth and/or currently working in New Plymouth.

The orchestra will perform New Zealand composer Anthony Ritchie's Procession, Joseph

Canteloube's exquisite Bailerio from Songs of the Auvergne, with soprano Frances Campbell, and Dmitri Shostakovich's amazing Symphony no 5.

All proceeds from ticket sales will be donated to Hospice Taranaki.

Commented Lynette Murdoch, organiser for the New Zealand Doctor's

orchestra, they were "delighted" to be returning to New Plymouth and invites everyone to come along.

It should be a full programme and a great afternoon's entertainment.

So keep Sunday afternoon on July 23 free.

Tickets are \$25, or \$10 for under 18 years (service fees apply) and can be bought at:

- TSB Showplace Box Office
- Online at: www.premier.ticketek.co.nz
- Phone: 0800 TICKET (842 538)
- Preconcert door sales will be available.

CHURCH SERVICES



Church Services - Manaia, Kaponga, Opunake, Pungarehu, Okata, Oakura

Opunake Co-operating Parish

Havelock Street, Opunake - St Pauls - 9.30am every Sunday
Rahotu - Wesley - 11am first Sunday of the month

Okato Co-operating Parish

Okato - St. Paul's - Sunday Service every 1st and 3rd Sundays of each month, 10.00am
Oakura - St. James - Sunday Service every 2nd and 4th Sundays of each month, 10.00am
Mid-week Service - Okato - St. Paul's - Pew for You, every 3rd Thursday of each month, 4.30pm-6.00pm

Opunake Catholic Church

St Martins, Pungarehu: 8.30am every 2nd and 4th Sundays of the month
Our Lady Star of the Sea, Opunake: 10am every Sunday
Other areas
Manaia - Sacred Heart - 1st, 3rd Sat at 5pm (2nd, 4th & 5th Sat at Hawera's St Josephs)

St Patricks Catholic Church, Kaponga

2nd, 4th and 5th Saturdays of the month Mass at 6pm. However during winter the time will be 5pm i.e. Saturday 10th June, 24th June and 8th July. After this date the time will revert back to 6pm.
1st and 3rd Sundays of the month Liturgy of the Word with Communion at 8.45am.
Thursday Mass 9.30am (subject to change).

St Patricks Catholic Church, Okato

Saturday Vigil 6.00pm - 1st, 3rd & 5th Saturdays

The Wave

Pentecostal Church 64 Domett St, Opunake
Sunday Services 10.30am
Women's Group 10am Tuesday
Men's Group 7pm Wednesday
Come along or contact
Belinda Philp
027 935 6191

St. Barnabas Anglican Church

141 Tasman St, Opunake
Sunday Services 10am
Communion 2nd, 3rd & 4th Sunday
Prayer & Praise 1st Sunday
Every 5th Sunday all 4 churches gather for a Combined Service

Okato Community Church

Meets 10.30am Sunday at Hempton Hall.
Everyone welcome

NZ DO

NEW ZEALAND DOCTORS' ORCHESTRA CONCERT 2023

ALL PROCEEDS DONATED TO **HOSPICE TARANAKI**

Ritchie Procession

Canteloube Bailerio from Songs of the Auvergne

Shostakovich Symphony no.5

Soprano
FRANCES CAMPBELL

Conductor
MARK HODGKINSON

SUNDAY 23 JULY, 2.00PM

**THEATRE ROYAL
TSB SHOWPLACE
NEW PLYMOUTH**

TICKETS \$25 | UNDER 18 \$10
Service fees apply



Tickets from TSB Showplace Box Office, online at www.premierticketek.co.nz, or phone 0800 TICKET (842 538). Pre-concert door sales available

TSB SHOWPLACE

EVERYBODY'S THEATRE OPUNAKE

72 Tasman Street, Opunakē - www.everybodystheatre.co.nz Phone 027 383 7926
Adults \$12, Students 4-16yrs and Senior Citizens \$10, Under 4 free

THE UNLIKELY PILGRIMAGE OF HAROLD FRY

Drama | 1hr 42mins | M: Language
Thursday 15th June 7 pm
Sunday 25th June 1pm

THE FLASH

Action, Adventure | 2hr 24mins | M
Friday 16th June 7pm
Saturday 24th June 7pm

THE LITTLE MERMAID

Fantasy, Family | 2hrs 15mins | PG
Saturday 17th June 1pm

MAYBE I DO

Comedy, Romance | 1hr 35mins | M:
Language
Saturday 17th June 7pm

JESUS REVOLUTION

Drama | 2hrs | M: Drugs
Sunday 18th June 1pm

BANK OF DAVE

Comedy, Romance | 1hr 47mins
M: Language
Sunday 18th June 7pm



TRANSFORMERS - RISE OF THE BEAST

Action | 2hrs 7mins | M: Violence
Thursday 22nd June 7pm

NO HARD FEELINGS

Comedy | 2hrs 6mins | R16: sexual scenes
Friday 23rd June 7pm
Sunday 25th June 7pm

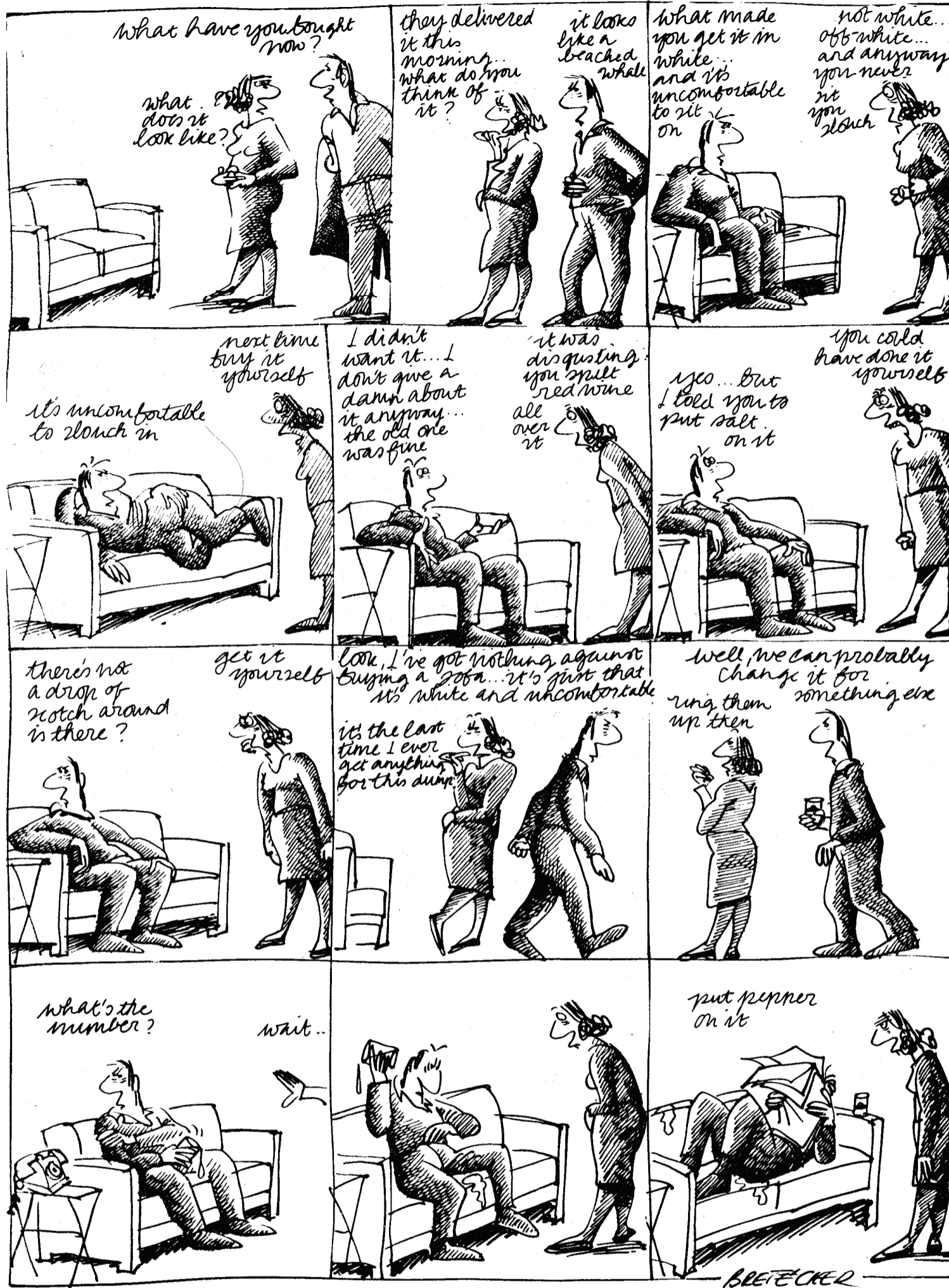
ELEMENTAL

Adventure, Family | 1hr 42mins | G
Saturday 24th June 1pm



What's On Listings

TWO SEATER



ONGOING
Movies at Everybodys Theatre in Opunake: Playing several days and nights each week. Refer timetable in newspaper.
MONDAYS: Tainui Day Centre - St Barnabas Church Hall, 141 Tasman Street Opunake: Each Monday 10 am - 12:30 pm. Information call Jenny 7618080 or Glenys 6558025
TUESDAYS
Opunake Walking Group: Every Tuesday 10am. Meet outside Club Hotel on Havelock St. Phone Margaret 027 477 5600 for more info if needed, or just turn up.
WEDNESDAYS
Lisa Keen Audiology at Coastal Care, Opunake: Wednesdays 9am - 5pm, for an appointment call 027 591 4222 - 0800 555 676
Okato & District Historical Society open every Wednesday: At the Okato Community Trust Hall, 47 Cumming St, Okato. phone Meg on 06 752 4566.
Opunake Embroiders Guild: Meet 2nd and 4th Wednesdays of the month, 10.30am-3pm at the Opunake Business Centre, Napier St, Opunake. Just come along or phone Sheryl 06 761 8769.
Okato Market: In Hempton Hall, Okato 4pm to 5.30pm.
Free singing experience with Taranaki Harmony Chorus: Meet every Wednesday at Inglewood Mamaku Centre, 7-9.30 pm Phone Helen 021 296 0700.
THURSDAYS
Coastal Young Farmers: Meet 2nd Thursday of every month at 7pm at Butlers Reef Bar & Cafe, Oakura.
Egmont Euchre Club: Every Thursday 1pm at the Opunake Bowling Club. Inquiries, 06 761 8277 or 06 761 8337
Taranaki Country Music Hall of Fame, Manaia: Running every Thursday night from 7.30pm, 11 Surf Highway, South Road, Manaia.
FRIDAYS
Eltham Business Association Friday Markets: 9:30am to 1pm, Carpark of Touch Point, High Street, Eltham.
Singer Songwriters, New Plymouth: Last Friday of the month at Little Theatre, 29 Aubrey St, NP from 7-11pm.
APRIL 7 TO NOVEMBER 6
State of Nature exhibition: PukeAriki Museum, New Plymouth.
JUNE 1 TO JULY 10
With a Flour-ish solo exhibition: By Anne Garvey. At the from out of the blue studio gallery, Opunake. Thursdays to Mondays 1-5pm.
JUNE 5 TO 30
Mid-Winter Madness members exhibition: At the Village Gallery, Eltham.
JUNE 16
Basic First Aid in Pihama.: 1pm to 5pm, \$30. To register: <https://events.humanitix.com/basic-first-aid> or contact fiona@taranakicc.nz.
JUNE 17
Opunake Bowling Club AGM: At the Bowling Club, 1.30pm.
JUNE 19
Essential First Aid in Pihama: 8:30am to 5pm, \$50. To register: <https://events.humanitix.com/essential-first-aid-training> or contact fiona@taranakicc.nz
JUNE 20
Egmont A&P Association AGM: At the Hawera Club, 38 High St, Hawera. 7pm.
Opunake Loop Trail AGM: At Sinclairs Event Centre, Opunake, 7pm.
JUNE 30
Tumahu Hall Paper, Scissors, Rock tournament: At the Hall, 2417 Wiremu Rd, 5pm.
JULY 1
LIVE MUSIC featuring THE SLACKS:
 More info and to buy tickets: <https://events.humanitix.com/pihama-party>
 Brought to you by the Pihama/Oeo Catchment Community and Taranaki Catchment Communities (TCC).
'A Colour Extravaganza' with Opunake Players: At Sinclairs Event Centre, Opunake. 7pm..
JULY 6
Regen Farming Discussion Group Series: Tikorangi, 11:15am to 1:30pm with lunch included.
<https://events.humanitix.com/taranaki-regen-presents>
www.taranakiregen.nz
JULY 7 TO 15
Hawera Rep Society presents 'Aladdin': At the Hawera Memorial Theatre
JULY 10
Opunake Business Association AGM: At the Opunake Business Centre, 5pm.
JULY 23
NZ Doctor's Orchestra: TSB Showplace, New Plymouth, 2pm.

NZ FARMERS LIVESTOCK

WANTED TO BUY

Dairy Herds and Dairy Heifers

for the coming season

Contact:
 Bryan Goodin - 027 531 8511
 Sheldon Keech - 027 222 7920

JANES GALLERY

Where Picture Framing is an Art

WE HAVE MOVED TO 33 GOVER STREET, NEW PLYMOUTH PHONE 06 758 8746

JULY 1
LIVE MUSIC featuring THE SLACKS:
 More info and to buy tickets: <https://events.humanitix.com/pihama-party>
 Brought to you by the Pihama/Oeo Catchment Community and Taranaki Catchment Communities (TCC).
'A Colour Extravaganza' with Opunake Players: At Sinclairs Event Centre, Opunake. 7pm..
JULY 6
Regen Farming Discussion Group Series: Tikorangi, 11:15am to 1:30pm with lunch

included.
<https://events.humanitix.com/taranaki-regen-presents>
www.taranakiregen.nz
JULY 7 TO 15
Hawera Rep Society presents 'Aladdin': At the Hawera Memorial Theatre
JULY 10
Opunake Business Association AGM: At the Opunake Business Centre, 5pm.
JULY 23
NZ Doctor's Orchestra: TSB Showplace, New Plymouth, 2pm.

PUBLIC NOTICES

OPUNAKE LOOP TRAIL AGM

June 20
7pm
Upstairs at the
Sinclair Electrical and Refrigeration Events
Centre, Opunake
New members welcome

TRADES & SERVICES



HCL Builders
Heartland Construction Ltd
Contact Phill - 027 236 7129

SITUATIONS VACANT



Opunake High School
Te Kura Taarua o Opunake

ŌPUNAKĒ HIGH SCHOOL

TEACHER AIDE

We are looking for a Teacher Aide to work alongside students who have diverse learning needs in class, small group and individual situations. You will need good literacy and numeracy skills and the ability to work as part of a team and interact with the whole school community.

This is a wonderful opportunity to work in our collegial, student centred, innovative kura.

Part time hours for this position are to be negotiated.

Written applications should include a brief CV to:

The Principal
Opunake High School
PO Box 4
Opunake 4616
admin@opunake.school.nz

Applications close Friday 23rd June, 2023

DRIVERS REQUIRED

The school needs drivers to support our offsite learning. If you are interested in this paid position please enquire to the school office.

Opunake-Rahotu Veterinary Trust

PO Box 117, Opunake - Phone: 021 729 471 - Email: ORVTrust@gmail.com

Applications are now open for tertiary students to apply to the
Opunake Rahotu Veterinary Trust
for financial assistance.

To qualify for this grant you must be currently studying or in an apprenticeship and have a relationship to the Taranaki Coastal Farming Community (Okato - Kaponga - Oeo)

Applications close 31st July 2023. Request a form by emailing:
ORVTrust@gmail.com

Completed forms can then be emailed back or by post to:

The Secretary
PO Box 117
Opunake 4616

McNEIL DECORATING
- for all your painting and decorating. Ph: Jason McNeil 027 233 4584.

HCL BUILDERS for concrete work. Ph 027 236 7129.

HCL BUILDERS for building decks. Ph 027 236 7129.

CARPETS second hand, large selection After Disaster Ltd 223 Devon St West, NP. Phone (06) 769 9265



PUBLIC NOTICES



AGM

Monday July 10 2023,
5.30pm

Hughsons & Associates
Boardroom at the
Opunake Business Centre,
23 Napier St, Opunake
(opposite the Coastal Care
Medical Centre)



Department of
Conservation
Te Papa Atawhai



TARANAKI MOUNGA
He Kawa Ora - Back to Life

SUPPORTING OUR TAONGA SPECIES TO THRIVE - Predator control on Egmont National Park

Taranaki Mounga Project is an ambitious, landscape-scale project working to enhance our native birds, flora and fauna across Mt Taranaki, Pouakai and Kaitake, as well as Ngā Motu/Sugar Loaf Islands. In 2023, the Department of Conservation (DOC), with the support of the Taranaki Mounga Project, will conduct an aerial 1080 predator control operation to treat more than 34,000 hectares of the National Park. This will target rats, stoats and possums which are the biggest threat to our native species.

Why we are doing predator control

Whio (blue duck), titipounamu (rifleman), miromiro (tomtit), rūrū (morepork), kererū (New Zealand pigeon) and many other native bird species are now seen more regularly and in higher numbers in the national park. These species are good indicators predator control operations in Egmont National Park are working. Thanks to intensive trapping complemented with aerial 1080 operations, who numbers have risen from functionally extinct 20 years ago to around 40 resident pairs across eight intensively monitored rivers. These rivers are now at carrying capacity and spill over of birds is occurring right around the Mounga with at least 200 birds estimated.

Seeing our forest flourish and having even more native birds visit neighbouring communities is another measure of success. Returning other species such as kākā, yellow-crowned kākārīki, kōkako, and more kiwi is also our dream for the future.

Predator control works

Aerial 1080 remains one of our best tools in protecting native taonga and is the most efficient, effective, and safest way to control predators in the rugged country of the National Park. In particular, it targets all predators in their home ranges at the same time. This is fundamental to the success of the project.

Method of predator control

DOC has worked closely with its treaty partners on desired outcomes and consulted with stakeholders and the community. Between 27 June 2023 and 27 August 2023 DOC with its contractor Epro Ltd will apply baits containing biodegradable 1080 over the area shown on the map. A pre-feed of non-toxic baits will occur first priming the predators to eat the pellets.

The toxic cereal bait pellets contain 0.15 per cent of 1080, are cylindrical and approximately 2cm in diameter. They are dyed green to deter birds and contain a cinnamon lure to attract rodents.

Non-toxic pre-feed cylindrical pellets are approximately 2cm in diameter and sandy coloured (not dyed).



The aerial operation uses calibrated buckets and GIS mapping technology to ensure bait drops in the designated area. Please see map attached.

1080 is poisonous to humans and domestic animals. Always remember:

- **DO NOT** touch or eat the bait.
- **WATCH CHILDREN** at all times.
- **DO NOT EAT** animals from this area.
- Toxic baits and carcasses are **DEADLY to DOGS**. These may wash downstream and out of the National Park.

Observe these rules whenever you see warning signs placed at the public access ways in the above areas. Warning signs indicate pesticide residues may still remain in baits and carcasses, possibly for more than six months.

If you suspect poisoning

Always contact your local doctor or local hospital or the National Poisons Centre: 0800 764 766 (urgent calls) or 03 479 7248 or dial 111.

For further information, contact:

- Biodiversity ranger, DOC Ngāmotu/New Plymouth Office 55A Rimu Street, Strandon, New Plymouth 4312 Ph: 06 759 0350
- Epro Ltd, 283 Broadlands Road Taupo, 07 378 4852

WANTED TO BUY

SCRAP METAL - for all scrap metal Taranaki wide, give us a call. Molten Metals (06) 751 5367. www.moltenmetals.co.nz

FOR SALE

CALF BEDDING. Woodchip, Sawdust Shavings, Kalin Contracting Ph 027 384 4822.



meritcars

with distinction

VISIT WEBSITE MERITCARS.CO.NZ

493 DEVON STREET EAST, STRANDON, NEW PLYMOUTH
CALL US TODAY 06 281 1925

ALL ON ROAD COSTS INCLUDED PLUS TANK OF FUEL. ONE STOP SHOP FOR FINANCE, WARRANTIES & FREE SMILES

2003 HYUNDAI SONATA 2.4 GL 4D A4
GREAT VALUE
2WD, 2351cc, Petrol, Auto, 170kms



\$5,995

2017 MAZDA 3 2.0 GLX NZ NEW: POPULAR NZ NEW 2.0 HATCH
Tiptronic Auto, I-Stop Technology, Emergency Brake Assist, Hill Hold / Launch Assist, Keyless Entry & Pushbutton Start, ABS Brakes, Multi Airbags inc Side Curtain, Traction Control, a, 83km



ONLY \$21,995

2013 Ford Territory TITANIUM RWD
Great Value, Cruise Control, Auto Headlights, Reversing Camera, 7 seats, 3984cc, Petrol, Auto, 266kms



\$10,995

2015 Ford KUGA AWD 1.6P ECOBOOST A
LOW KM NZ NEW SUV, Turbo, Cruise Control, Keyless Start, 1596cc, Petrol, Auto, 53kms



ONLY \$21,995

2008 HYUNDAI TUCSON 2.0P CITY 4D A4
COMPACT SUV. Cruise Control, 5 seats, 1975cc, Petrol, Auto, 135kms



\$9,995

WE ARE YOUR ONE STOP SHOP FOR QUALITY VEHICLES. FINANCE AND INSURANCE FROM ZERO DEPOSIT AND ALL ON-ROAD COSTS INCLUDED IN PRICE.

THIS WEEK'S SPECIAL:
2005 Holden COMMODORE SS UTE

SS V8! 2WD, Cruise Control, Auto headlights, 5665cc, Petrol, Auto, 259kms



\$19,995

2013 NISSAN NAVARA KINGCAB 2.5D 4WD RX NZ NEW 4WD
Flatdeck Ideal Farm Ute, 6 Speed Manual, Diesel Turbo, ABS Brakes, Stability Control, Dual Airbags, Cruise Control, Air Con, Remote Central Locking, Electric Windows, Stereo, Bullbar with Side Steps.



SAVE \$2000 NOW \$22,995

2015 Ford Ranger XL DOUBLE CAB W/S A
2WD, Cruise Control, Tow Bar, 5 seats, 3198cc, Diesel Turbo, Auto, 123kms



\$31,995

2013 Kia Sportage URBANEX 2.0P6A/SW5D5
GREAT VALUE, Auto Headlights & Wipers, Cruise Control, Tow Bar, Reversing Camera, 1998cc, Petrol, Auto, 108kms



ONLY \$16,995

2014 HYUNDAI IX35 GDi 2.0 AUTO
STYLISH NZ NEW SUV, 2WD, Reversing Cam, Parking Sensors, 5 seats, 2000cc, Petrol, Auto, 155kms



\$15,995

2019 TOYOTA YARIS GX NZ NEW
Popular NZ New Hatch- Low Km's! Automatic, Power Windows & Mirrors, Remote Central Locking, ABS Brakes, Multiple Air Bags inc Side Curtain, Stability Control, Accident Mitigation System



\$17,995

2011 TOYOTA RACTIS
2WD, 1329cc, Petrol, 5 door hatchback, 5 seats, CVT, 72kms



\$11,995

2013 HYUNDAI ACCENT 1.6 5D A4
2WD, Air Conditioning, Power Steering, 5 Seats, 1591cc, Petrol, Auto, 65kms



ONLY \$13,995

VEHICLES ARRIVING DAILY - SEE ONSITE SPECIALS
VISIT MERITCARS.CO.NZ



LOCALLY OWNED & OPERATED

Ph 06 281 1925 • Chris Elliot 027 471 5972

Ph 06 757 3585 • Jamie Henry 021 556 223